



---

SILENT-YACHTS



SILENT 60

welcome to the  
new era of yachting

# our mission

Create an independent and environmentally friendly yachting experience which combines the silent cruising of a sail boat with the luxury of a motoryacht.



# the future of yachting is solar



PRESERVE THE PURITY OF THE OCEAN  
EMBRACE THE SOUND OF SILENCE  
EXPERIENCE UNPRECEDENTED LEVELS  
OF TRANQUILITY AND PLEASURE



# facts can't be silenced

SOLAR POWER FOR PROPULSION  
AS WELL AS ALL NAVIGATION,  
HOUSEHOLD & COMFORT  
APPLIANCES ON BOARD

WORLD RECORD 2018 - SILENT 64  
FIRST EVER SOLAR POWERED  
PRODUCTION YACHT TO CROSS THE  
ATLANTIC OCEAN

AWARD WINNING TECHNOLOGY  
11x AWARDS WON HONORING  
OUR DRIVE FOR INNOVATION  
SINCE 2009



# SILENT 60



# SILENT 60

## THE ICONIC ORIGINAL - REINVENTED

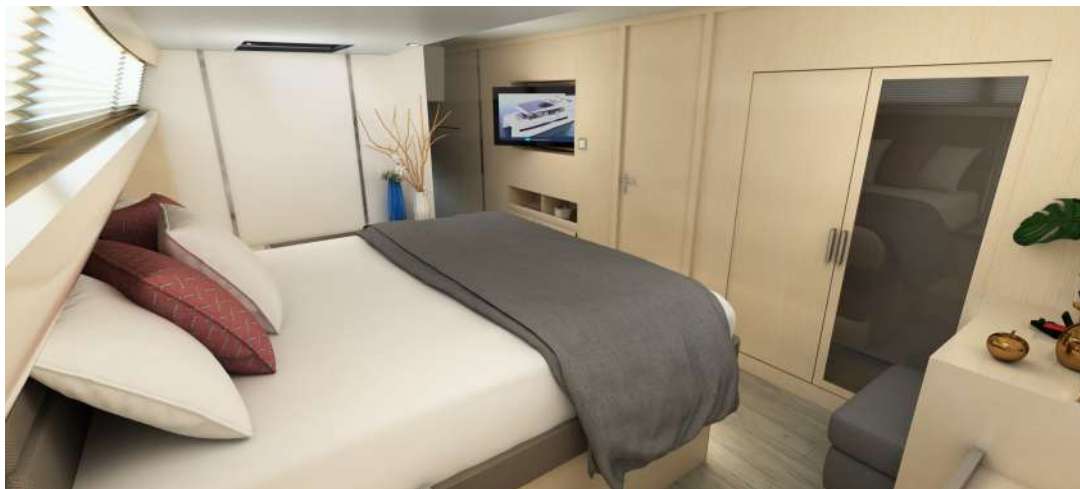
The SILENT 60 embodies the next generation of the legendary SILENT 64, the first production solar powered yacht to have ever crossed the Atlantic. She can be handled by two people with ease and offers plenty of space for families and crew. Furthermore, she offers the possibility to upgrade the tender from 3.8m to 4.2m through the optional hydraulic platform, which also includes a sofa with a flippable backrest. For adventurers, additional water toys, sups, kayaks and e-bikes can be stored in the bridge deck.

# specifications

LENGTH OVERALL	17,99 m (59.0 ft)
BEAM OVERALL	8,99 m (8,99 ft)
DRAFT	0,93 m (3.0 ft)
LIGHT DISPLACEMENT	29 tons
WATER	1000 L
WASTE-WATER	2 x 500 L
FUEL	2x 500 L (Standard) - 2x 800 L (Upgrade)
SOLAR PANELS	17 kWp
CERTIFICATION	CE-A
RANGE	Trans-Ocean



# interior

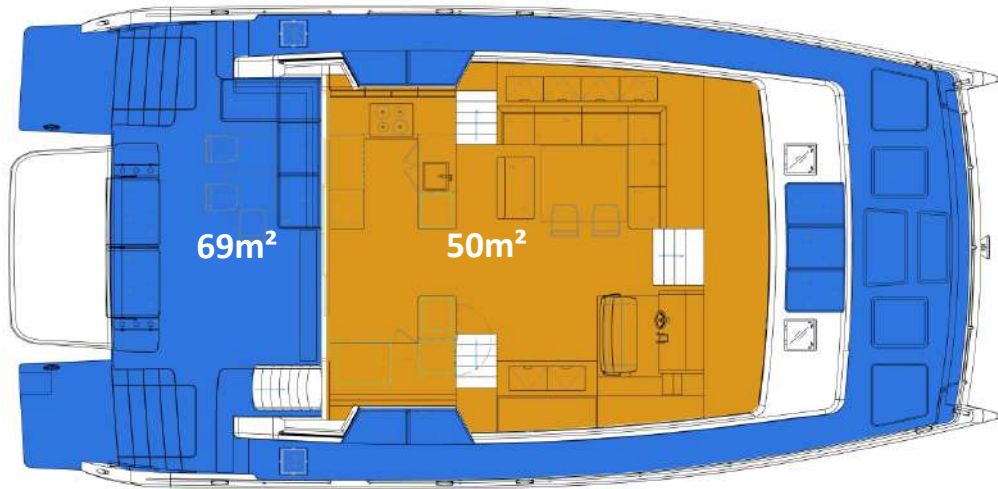




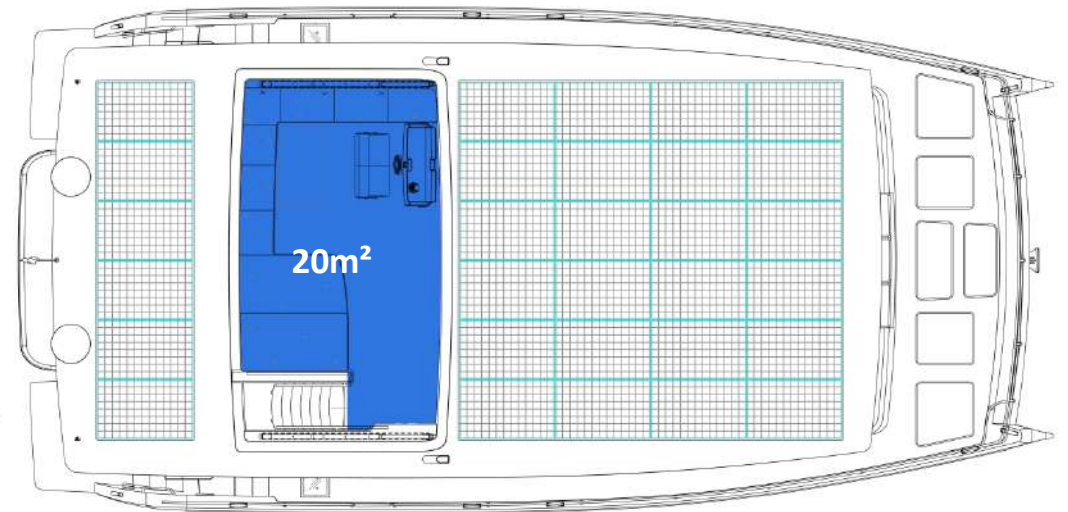
# interior



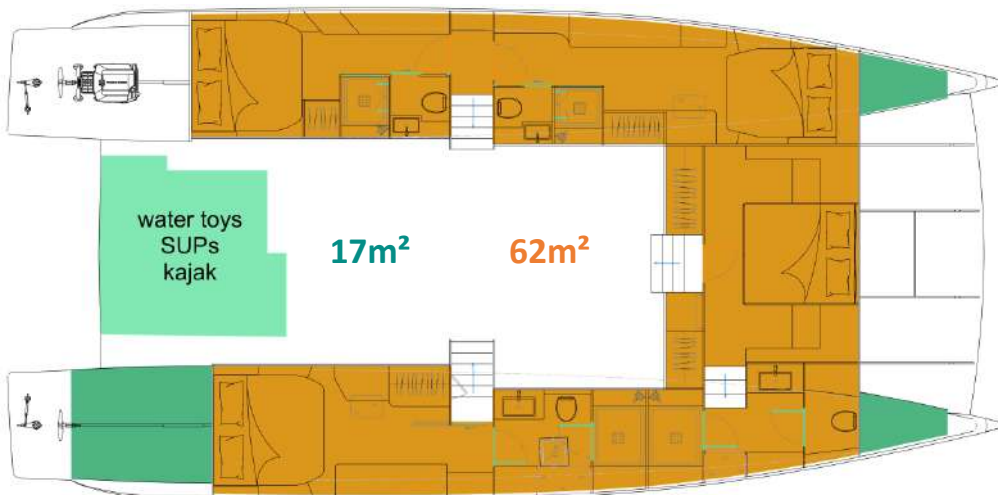
# living space front master cabin



Main Deck



Flybridge

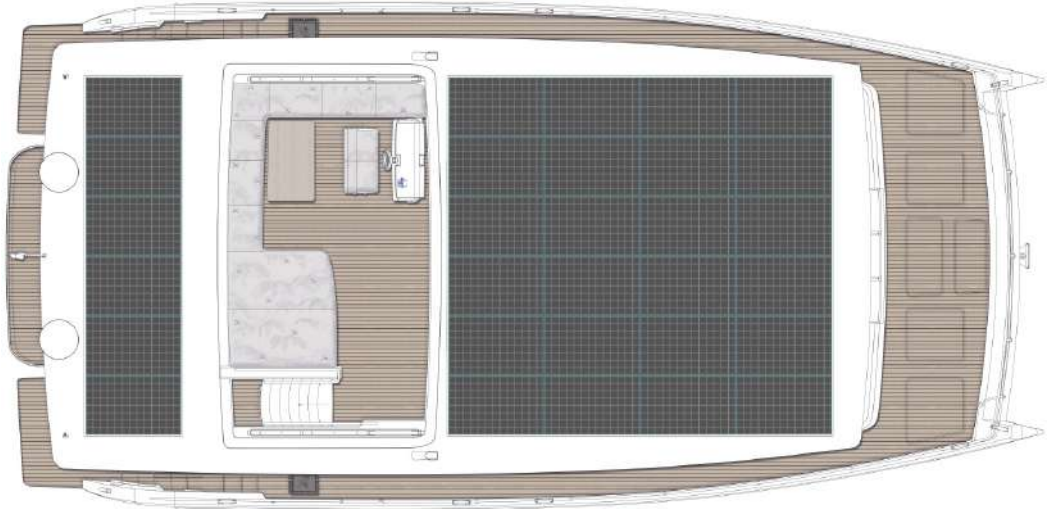


Cabin Deck - 4 Cabins / 4 Bathrooms

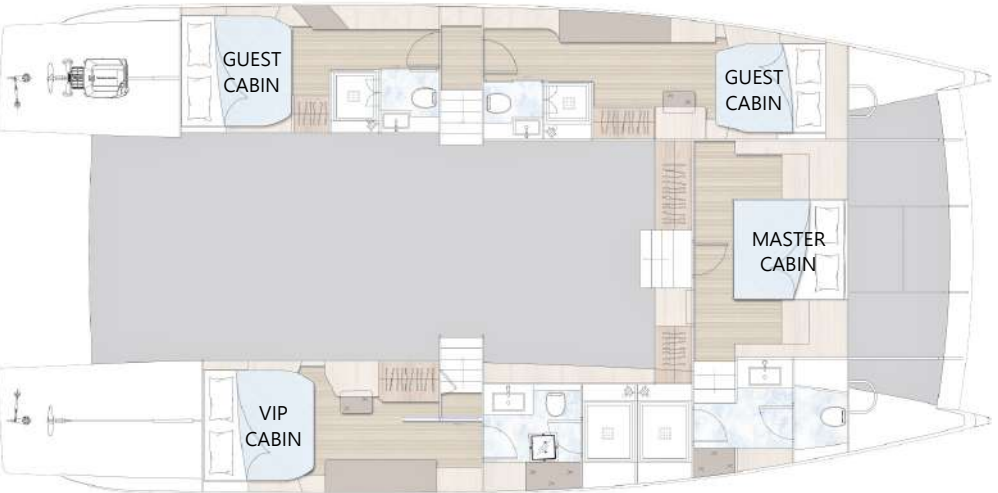
# floor plans front master cabin



Main Deck

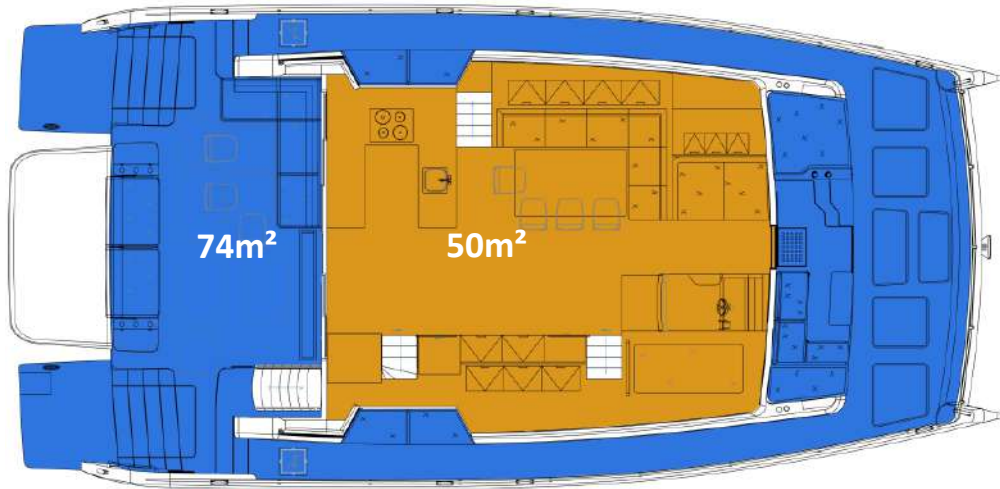


Flybridge

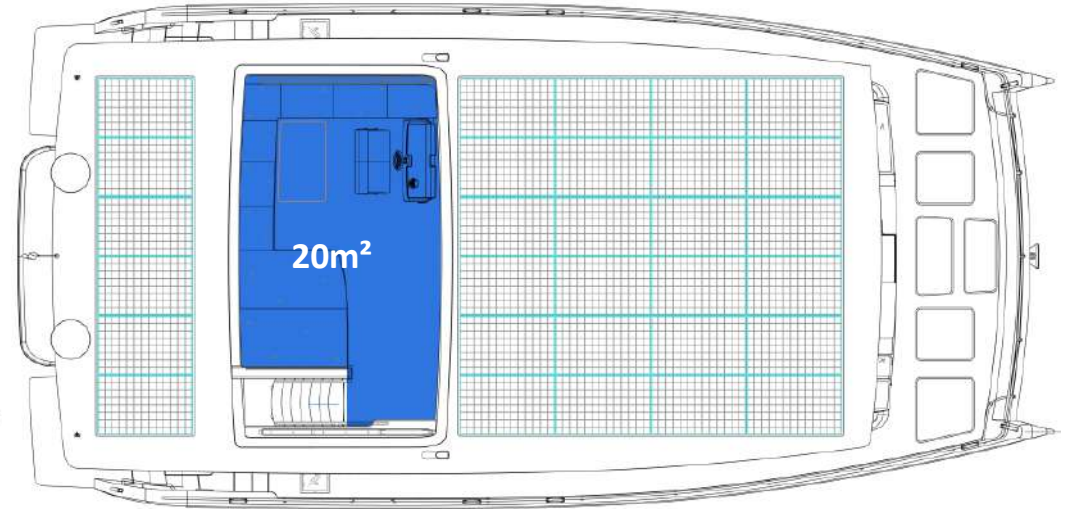


Cabin Deck - 4 Cabins / 4 Bathrooms

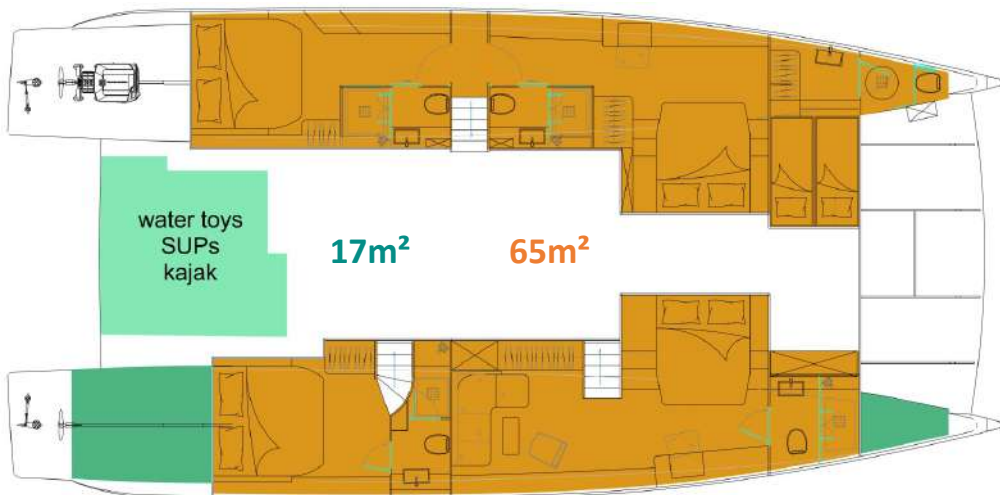
# living space front exit option



Main Deck

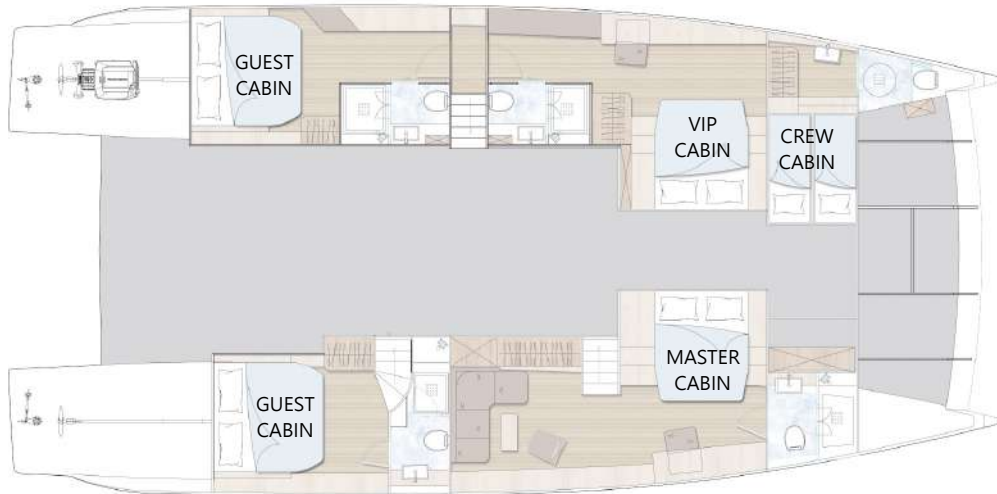


Flybridge

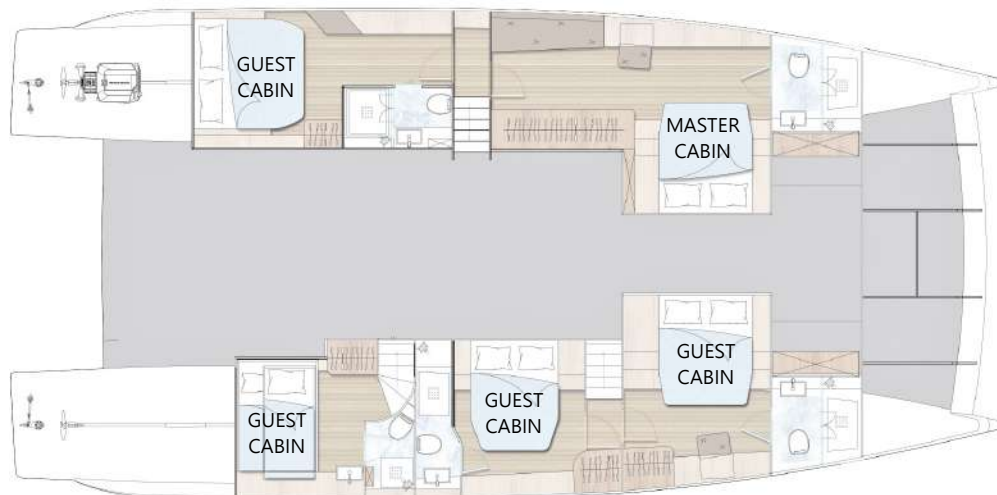


Cabin Deck - 4 Cabins / 4 Bathrooms

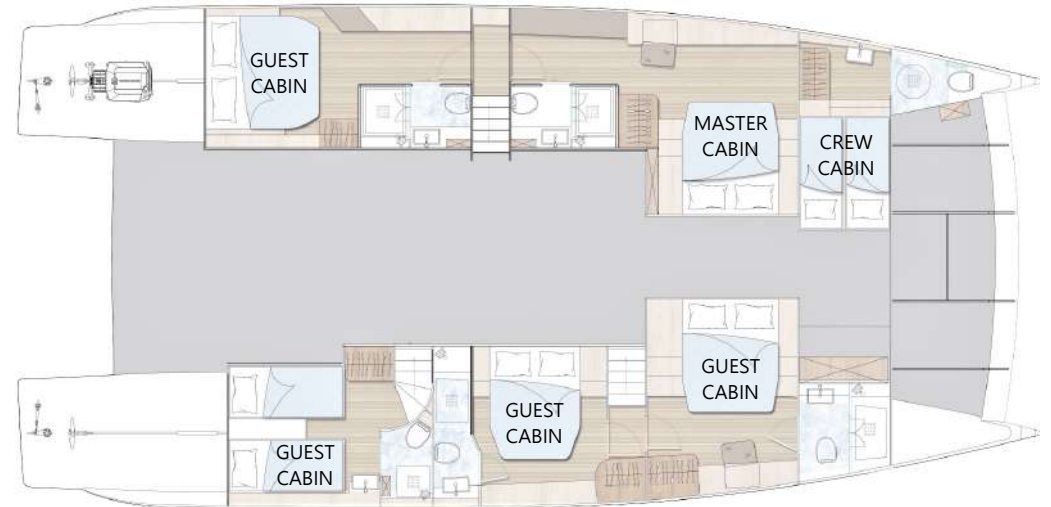
# cabin variations front exit option



Cabin Deck - 4 Cabins +1 Crew Cabin / 5 Bathrooms



Cabin Deck - 5 Cabins / 5 Bathrooms



Cabin Deck - 5 Cabins +1 Crew Cabin / 6 Bathrooms

# silent advantages

Safest Marine  
Propulsion System

Unlimited  
Cruising Range

Noiseless &  
Fumeless  
Luxury Navigation

No Heat Build-up  
No Gas On Board

**100% Solar Powered**

Highest Quality  
Materials and  
Craftsmanship

8 Years  
Warranty  
Battery Banks

25 Years  
Warranty  
Solar Panels

Lifetime  
Warranty  
Electric Motors

# propulsion options

## STANDARD DRIVETRAIN

### CRUISER

2x 30 kW E-Motors  
on Shafts  
75 kWh Lithium Battery  
20 kW Generator

Cruising Speed 6-8 kt  
Top Speed 9-10 kt

## DRIVETRAIN UPGRADE

### E-POWER

2x 150 kW E-Motors  
on Shafts  
150 kWh Lithium Battery  
150 kW V6 Generator

Cruising Speed 6-8 kt  
Top Speed 13-14 kt

## DRIVETRAIN UPGRADE

### E-POWER +

2x 250 kW E-Motors  
on Shafts  
225 kWh Lithium Battery  
150 kW V6 Generator

Cruising Speed 6-8 kt  
Top Speed 16-17 kt



additional **kite sail system**

## OPTIONAL ADDITION TO DRIVETRAIN OF CHOICE

- Operates at higher altitudes compared to traditional sails where winds can be up to 2x as strong
  - Flies at heights of up to 140m
- Dynamic flight pattern resembles the shape of a figure 8
  - Generates 10x more power per square meter in comparison to a conventional sail

# specifications & options

## SILENT 60 EQUIPMENT

### STANDARD FEATURES

4 Cabins: 1 full-width (20m<sup>2</sup>) Master-cabin , 1 VIP-cabin, 2 generous guest cabins, with 1 double bed or 2 single beds each  
All cabins with en-suite bathroom

2 x 30 kW e-motors on shafts, 75 kWh lithium battery, 20 kW diesel generator

Electro-hydraulic steering and controls for 2 motors at the helm positions

Side-by-side fridge/freezer with ice maker and chilled water

Navigation instruments: 4 monitors 9" with world basemap, 4 G broadband radar, electronic compass, autopilot incl. controller and pump, rudder feedback, AIS class B, 2 set of VHF radio, antennas, depth sounder, weather station + 2x AP control unit

High efficiency air conditioning system

High pressure water maker producing 95 L / h

Rigid sunroof over flybridge

### OPTIONAL FEATURES

Grand salon versions with front exit and front cockpit

Hydraulic stern-platform serves as a tender-lift and as a swimming platform

Retractable sunroof incl. hydraulic lifting system, control switches + remote control

Several more options available to further customize the SILENT of your dreams ...



# SILENT 60 production



# Multi-Award Winning Design & Engineering



GLOBAL WARMING  
FOUNDATION  
2018 AWARD



Energy  
Globe  
2012/13



SILENT-YACHTS

[sales@silent-yachts.com](mailto:sales@silent-yachts.com)

[www.silent-yachts.com](http://www.silent-yachts.com)



HIGHLY COMMENDED

