

SEVENTY



Technical specifications



LAGOON

Contents

Technical characteristics.....	2
Construction.....	3
Rigging	3
Deck hardware.....	3
Mooring/Anchoring	3
Propulsion and steering gear.....	4
Fuel system.....	4
Fresh water system.....	4
Grey water and black water systems	5
Bilge pumping system.....	5
Electrical system	7
Lighting.....	8
Ventilation and extraction system.....	9
Deck fittings.....	9
Equipment, finishes and interior design.....	12
Saloon – Galley up version	14
5 cabins – Galley up version.....	16
6 cabins – Galley up version.....	21
Saloon – Hull Galley version	26
4 cabins – Forward galley version	28
5 cabins – Forward galley version	34
3 cabins – Aft galley version.....	40
4 cabins – Aft galley version.....	46

Technical characteristics

Length overall	23,84 m / 78'3"
Hull length	23,28 m / 76'5"
Length on waterline	23,05 m / 75'8"
Beam overall	11,00 m / 36'1"
Mast clearance	38,20 m / 125'4"
Draft	1,90 m / 6'3"
Light displacement (EC)	63,348 t / 139 682 Lbs
Square top mainsail (optional)	205 m ² / 2206 sq.ft.
Genoa (optional)	130 m ² / 1399 sq.ft.
Staysail (optional)	76 m ² / 818 sq.ft.
Code 0 (optional)	208 m ² / 2238 sq.ft.
Asymmetric spinnaker (optional)	448 m ² / 4820 sq.ft.
Fresh water capacity	2 x 800 l / 2 x 211 US gal
Grey water capacity	2 x 300 l / 2 x 79 US gal
Fuel capacity	2 x 1400 l / 2 x 370 US gal
Engines	Volvo D4-175 hp or John Deere N5-230 hp
Naval architect	VPLP Design
Exterior design	Patrick Le Quément
Interior design	Nauta Design
Design category	A : 14 - B : 18 - C : 24 - D : 40

Construction

- Polyester and anti-osmotic resins infusion process on balsa core
- Hull bottoms and keels in solid infused laminate

Rigging**STANDING RIGGING**

- White-painted aluminum mast with 3 sets of spreaders
- Spreader lighting
- Deck light on mast
- White-painted aluminum boom with integrated spotlights
- 2 sheathed Kevlar® shrouds
- 2 sheathed Kevlar® lower shrouds
- 1 rod forestay for spinnaker with FACNOR hydraulic furling
- Adjustable lazy-jacks with spacers

RUNNING RIGGING

- 1 Dyneema® double-purchase main halyard
- 1 Dyneema® boom topping lift
- 3 Dyneema® reef tacks
- Mainsheet led back to winch via boom

Deck hardware

- 2 x 24V 80.2 STEA electric winches for main halyard/mainsheet
- 3 x 80.2 STA manual winches for various operations (electric winches optional)
- ANTAL electric line driver 1000W LD
- White-painted aluminum crossbeam with genoa furler chain plate and anchor davit

Mooring/Anchoring

- Anchor chain path incorporated into compression beam
- 1 QUICK 3500W 24V electric windlass with horizontal gypsy (16 mm chain) on deck and remote control
- Chain locker located on port of the windlass

- 13 mooring cleats
- 4 fairleads

Propulsion and steering gear

- 2 VOLVO D4-175 common rail diesel engines, shaft line assembly
- 2 MAUCOUR Hydraskew 4.73 25" propellers - 4 fixed blades
- Seawater filter
- Electric engine control on starboard helm station on flybridge
- 2 spade rudders: foam sandwich and stainless steel stock
- Epoxy rudder tubes
- Self-aligning upper and lower rudder bearings
- Hydraulic transmission (1 actuator per rudder)
- Hydraulic pump aft of steering shaft
- Engine bilge ventilation: natural aspiration and forced extraction in aft beam
- Engine compartment soundproofed

Fuel system

- 2 x 1400 liters / 2 x 370 US Gal aluminum tanks. Gauge on general distribution panel
- Primary filter and water separator with sensor and filter
- Fuel shutoff valve
- Fuel shutoff remote controls

Fresh water system

- Freshwater tanks: 2 x 800 liters / 2 x 211 US Gal with gauge at general distribution panel
- Freshwater system with 2 x 24V 36l/min (10 US Gal/min) pumps
- Hot water system with 2 x 100 liters / 2 x 26 US Gal water heaters with 230V heating element and engine heat exchanger
- Foolproof freshwater fillers on deck
- Freshwater intake on starboard transom skirt
- Freshwater/seawater deck wash pump aft & forward cockpits

Grey water and black water systems

GREY WATER

- Grey water tanks : 2 x 300 liters / 2 x 79 US Gal with gauge at general distribution panel
- Shower/washbasin and galley sink drained to grey water tank and automatic pump
- Manual and/or automatic tanks draining from the general panel
- Rainwater drains directly into the sea

BLACK WATER

- TECMA Silence Plus electric freshwater toilet in each head (24V)
- Black water tanks :
 - Port:
 - All versions: 1 holding tank per toilet (73 liters)
 - Starboard:
 - 2-cabin version: 1 common tank for owner and guest bathrooms (320 liters)
 - 3-cabin version: 1 holding tank per toilet (73 liters)
- Tank levels are monitored as per standard from the main panel
Solenoid valve for the black water draining in the owner and guest cabins. Manual valve for the crew cabin

Bilge pumping system

- Self-bailing cockpit in accordance with EC standards
- 2 manual bilge pumps operated from the cockpit (aft cockpit seat)
- 1 electric bilge pump with automatic float switch and manual override + bilge sump level alarm in each hull
- 1 electric bilge pump with automatic float switch and manual override + bilge sump level alarm in each engine compartment
- Alarms and controls:
 - Sump level alarm at the chart table and on the flybridge
 - 24V AC electric pump control panel incorporated into the main panel

- Bilge pump switch on starboard navigation station

Electrical system

ELECTRICAL PANELS:

- Main AC & DC panels in the port forward passageway
- Secondary AC & DC electrical panels installed in all areas of the vessel

230V AC, 50HZ SOURCES FOR:

- Shore power supply : 63 Ah as standard
- Alternators: 2 x 75 Ah 24V (D4-175 cv Volvo)
- Generators: ONAN 13.5 kva *starboard engine compartment*
- Inverters: VICTRON 2000 VA 24/230V

24V DC SOURCES WITH NEGATIVE EARTH FOR

- Batteries
 - Main batteries 24V 1050 Ah
 - Engine batteries 12V 75 Ah
- Battery charger : VICTRON Skilla 230V 100 Ah

230V AC DISTRIBUTION:

- BUS A
 - Sockets
 - Sockets in technical compartments
 - Engine starting battery charger
 - Bow thruster battery charger (optional)
 - Grey water treatment system (optional)
 - Electrical appliances in the galley
 - Oven
 - Hob
 - Extractor hood
 - Dishwasher (optional)
 - Microwave oven (optional)
 - Coffeemaker (optional)
 - Washing machine (optional)

- Dryer (optional)
- Washer-dryer (optional)

BUS B

- Service battery chargers

▪ BUS C

- Air handlers (optional)

▪ BUS D

- HiFi and video (optional)
- Standard galley refrigerator

SOCKETS

- In the saloon: 13 sockets in total
 - Port: 2 in the sofa base + 2* in the cabinet
 - Starboard: 2 in the sofa base + 1* in the HiFi cabinet
 - Forward lounge: 3 in the skirting + 2* in the bar cabinet
 - Chart table: 1 socket
- In the galley: 6 sockets
- In the cabins: 1 socket* per bedhead + 1 in the skirting

(*Each 230V socket comes with a USB socket (except in bases/skirting))

Lighting

Engine and generator compartment:

- 2 x 24V DC neon lamps are installed in the engine and generator compartment

Owner, VIP and guest cabins:

- LED spotlights and LED striplights in the ceiling
- LED lamps at the bedhead: Tolomeo Artemide
- LED courtesy striplights under the shelves and the furniture
- Dimmer switches alongside the entrance door and by the bed

Saloon:

- LED spotlights and LED striplights in the ceiling

- Dimmer switches alongside the entrance door, in the passageways and at the navigation station
- LED courtesy striplights under the shelves and bar cabinet
- 24V LED reading light at the chart table

Galley:

- LED spotlights and LED striplights under the furniture
- Dimmer switches

Bathrooms:

- LED spotlights

Ventilation and extraction system

INTERNAL VENTILATION

- Each cabin and each bathroom has at least one source of natural ventilation
- Aft starboard and forward port bathrooms are equipped with an extractor fan for the toilets with a dedicated control

ENGINE COMPARTMENT VENTILATION

- 2 x 24V DC electric fans
- Control of the engine compartment ventilation system connected to each engine

Deck fittings

FLYBRIDGE

- Access from cockpit via spiral staircase with teak steps on white-painted aluminum frame
- Hatch for manual closing of the access to the flybridge
- 2 ergonomic helm stations (main on starboard) with:
 - Helmsman's seat with storage underneath
 - Seat and backrest cushions
 - Ø1100 mm/3'7" steering wheel
 - Hydraulic steering

- Navigation instrument pod
- Compass
- Engine controls and panel on starboard
- Windlass control and chain counter on starboard
- Lighting control panel on starboard
- All lines led to forward area of the flybridge around 5 winches
- 6 halyard tidies
- Cabinet on port with:
 - Corian® countertop
 - Storage behind doors
- A central bar cabinet with:
 - Corian® countertop with integrated sink
 - Stainless steel cup-holder
 - Storage behind doors
 - 65 liters/17 US Gal refrigerator

DECK

- Aft cockpit deck, transom skirt, side decks and forward cockpit in teak
- Deck hatches:
 - Lewmar T60 flush
 - Lewmar T77 flush for forepeak
- Lighting:
 - LED spotlights in the ceiling
 - LED striplights under benches
 - LED striplights under transom skirt and deck steps
 - LED spotlights along the bulwarks
- Safety:
 - 880 mm rail stanchion
 - 300 mm composite bulwark
 - 2 rows of lifelines
 - Retractable aft lifelines on transom skirts
 - Pulpits with wooden seat

AFT PLATFORM AND TRANSOM SKIRTS

- Stainless steel foldable and removable swimming ladder with bail
- Hot and cold shower on starboard
- Shore power input socket on starboard transom skirt (63A)
- Freshwater inlet on starboard transom skirt

AFT COCKPIT

- Cockpit floor leveled with saloon's
- L-shaped bench seat with 3 storage lockers on starboard
- Teak table 2.3 x 1.2 m/7'7" x 3'11"
- 3 outdoor chairs (Brand: Tribu)
- Lazy boy with 2 storage lockers
- 2 sunbathing areas, port and starboard, with a locker in each area
- Starboard aft beam equipment:
 - Stainless steel cup holder
 - Storage behind doors and drawers
 - Corian® countertop
 - Sink below composite cover
 - 65 liters/17 US Gal cockpit refrigerator
- Port aft beam equipment:
 - Cup holder
 - Storage behind doors and drawers
 - Corian® countertop
- Storage for 2 life rafts under cockpit floor
- 2 storage lockers under cockpit floor

FORWARD COCKPIT

- Access from the saloon by way of a glass door (PMMA)
- 2 seating areas with 1 storage locker under port seating and maintenance access on starboard

FOREDECK

- 4 storage lockers including one dedicated to anchoring
- Trampoline with grey nylon mesh and fastener covering

FOREPEAKS

- Forepeaks with access through deck hatches
- Starboard sail locker :
 - Stainless steel ladder
 - Floor
 - White paint
- Port sail locker
 - Stainless steel ladder
 - Floor
 - White paint
- Workshop equipped with stainless steel countertop and multiple storage areas (Available for Galley up & Aft Galley versions)

Equipment, finishes and interior design

INTERIOR FINISHES

The following specifications may change according to the layout version selected

- Furniture and bulkheads in Alpi® grey oak with UV-resistant varnish
- Floor in Alpi Kord Wengé
- Head and shower floorings in Corian® (Clam Shell)
- Bathroom countertop in Corian® (Clam Shell)
- Ceiling: Vinyl (White)
- Roof frame: Vinyl (Meteor & Macadamia)
- Saloon gunwale in leatherette (Bison)
- Saloon furniture tops in leatherette (Bison)
- Chart table and desk in leatherette (Bison)
- Desk in cabin (Bison)

- Bedside table insert in leatherette (Navajo Ivory)
- Sofa and stool in fabric (Sunbrella Clay)
- Leather chair (FRAG – Taupe)
- Saloon dining table with stainless steel insert
- Bedhead in fabric (Sunbrella - Canvas)
- Bed frame in fabric (Sunbrella - Sepia)
- Locker handles in brushed stainless steel
- Doors with leatherette insert (Bison)
- Owner's cabin sliding door insert in fabric (Sunbrella - Canvas)

- Crew area:
 - Furniture and bulkhead in white laminate
 - Furniture details and kickers in grey laminate
 - Laminated flooring (Brown Oak)
 - Galley countertop in Corian® (Deep Mink)
 - Bed frame in fabric (Sunbrella – Nature Grey)
 - Upholstery in fabric (Sunbrella - Nature Grey)
 - Crew desk in leatherette (Grey - Peninsula)

MATTRESSES AND UPHOLSTERY

- Mattresses made of high resistance honeycomb foam. Air space 3D technology, (35kg/m³ - 77 Lbs)
- Blackout roller curtains in cabins
- Blackout roller curtains in saloon
- Mosquito net and shutter for deck hatches

Saloon - Galley up version



- Access from the aft cockpit through a wide glazed sliding door (overall dimensions 3.8 x 1.95 m/12'6" x 6'5" - opening dimensions 2.3 x 1.95 m/7'7" x 6'5")

TO PORT

- Galley :
 - Combined refrigerator/freezer with integrated icemaker (Samsung - Volume 396 L+124 L/105 US Gal+33 US Gal)
 - Corian® (Deep Mink) countertop with stainless steel double sink and hot and cold mixer tap
 - 1 x 4-burner induction hob 230V (Miele) and pan clamps
 - 1 extractor hood (Electrolux)
 - 1 low-level unit with 3 drawers and 2 doors
 - 1 low-level sliding waste receptacle
 - High-level sliding locker with two shelves
 - 2 high-level shelves (Slot for optional microwave)
- Central island:
 - 1 low-level locker with 5 drawers and 1 door (Slot for the optional dishwasher)
 - 1 electric oven (Miele)

- Sliding top-counter part

ON STARBOARD

- L-shaped sofa with 4 storage cubbyholes
- 3 leather chairs
- 1 high wooden table (2.3 x 1.25 m/7'7" x 4'1")
- 1 storage unit with a flap

CENTRAL UNIT

- Cabinet with wooden and lacquered glass top
- 3 drawers (Slot for optional wine cave)

CHART TABLE

- Chart table equipped with electronics
- Dedicated seat
- Sliding desk with storage and leather top

PRIVATE LOUNGE

- 1 L-shaped sofa with 3 storage cubbyholes
- L-shaped storage locker
- Storage behind the seat with top access

Access to the forward cockpit by way of a glass door (PMMA)

5 cabins - Galley up version



PORT HULL

Aft cabin:

- 2 single beds with side access (2.05 x 0.90 m/6'9" x 2'11") and slatted base, sliding and convertible into one double bed
- 1 central bedside table with stainless steel and leather insert
- 1 drawer under each bed
- 1 hanging locker - outboard side
- 1 storage locker- inboard side
- 1 T60 opening deck hatch
- 1 PMMA fixed hull window with 1 integrated T3 opening hull porthole

Aft bathroom:

- Corian® countertop (Clam Shell) with integrated washbasin
- Hot and cold mixer tap
- High-level locker with 1 mirrored door and 3 cubbyholes
- Low-level locker with 2 doors
- Separated shower with Corian® floor (Clam Shell), peripheral draining and toughened glass swing doors
- Head shower and additional hand shower
- Electric freshwater toilet (Tecma)

Mid-ship cabin:

- 1 island double bed (2.05 x 1.67 m/6'9" x 5'6") with slatted base
- 2 storage drawers under the bed
- 2 bedside tables with coin tray and 2 drawers below
- 1 desk with flaps and shelves
- 1 leather chair (FRAG)
- 2 bedhead wall lamps
- 1 desk with flaps and shelves - outboard side
- 1 hanging locker and 1 storage unit on each side of the desk - outboard side
- 1 T60 opening deck hatch
- 1 PMMA fixed hull window with 1 integrated T3 opening hull porthole

Mid-ship bathroom:

- Corian® countertop (Clam Shell) with integrated composite washbasin
- Hot and cold mixer tap
- High-level locker with 1 mirrored door and 3 cubbyholes
- 2 doors low-level locker
- Separated shower with Corian® floor (Clam Shell), peripheral draining and toughened glass swing doors
- Head shower and additional hand shower
- Electric freshwater toilet (Tecma)
- 1 T60 opening deck hatch

Forward cabin:

- 1 island double bed (2.05 x 1.70 m/6'9" x 5'7") with slatted base
- 2 bedside tables with, on each side:
 - Coin tray and double glass-holder
 - 2 storage drawers
- 4 storage drawers under the bed
- Unit with storage behind flap and double hanging locker in the upper section and 2 doors with 2 shelves in the lower section
- Outboard side:

- Desk with flap
- Bookcase with 3 shelves
- Low-level unit with 2 levels of shelves and 7 doors
- Unit with double doors providing 6 storage spaces in the upper section and 3 drawers in the lower section
- 1 T60 opening deck hatch
- 1 fixed hull window with 1 integrated opening hull port
- Door providing direct access to the bathroom

Forward cabin bathroom:

- Corian® countertop (Clam Shell) with integrated composite washbasin
- High-level locker with 1 mirrored door and 3 cubbyholes
- 2 low-level drawers
- Separated shower with Corian® floor (Clam Shell), peripheral draining and toughened glass swing doors
- Head shower and additional hand shower
- 1 T60 opening deck hatch
- Electric freshwater toilet (Tecma)

STARBOARD HULL

Aft cabin:

- 1 island double bed (2.05 x 1.67 m/6'9" x 5'6") with slatted base
- 2 storage drawers under the bed
- 2 bedside tables with coin tray and 2 drawers on each side
- Inboard :
 - 1 unit with hanging locker in the upper section and shelf in the lower section
 - Low-level units with 1 shelf and 2 doors
 - 1 T60 opening deck hatch
 - 1 PMMA fixed hull window with 1 integrated T3 opening hull port
- Outboard :
 - 1 desk with 2 flaps and 3 shelves

- One low-level unit with 2 doors and shelves

Aft bathroom:

- Corian® countertop (Clam Shell) with integrated washbasin
- Hot and cold water mixer tap
- High-level locker with 1 mirrored door and 3 cubbyholes
- Low-level storage unit with 2 drawers
- Separated shower with Corian® floor (Clam Shell), peripheral draining and toughened glass swing doors
- Head shower and additional hand shower
- Separated toilet :
 - 1 large storage unit with 2 mirrored doors with 4 shelves in the upper section and 2 drawers and 2 doors with shelves in the lower section
 - Electric freshwater toilet (Tecma)
- 1 PMMA fixed hull window with 1 integrated T3 opening hull port

Owner's suite:

- Access from the private lounge. Wooden sliding door
- Inboard :
 - 1 island double bed (2.05 x 1.80 m/6'9" x 5'11") with slatted base
 - 2 bedside tables with coin tray and 2 drawers on each side
 - Coin tray and double glass-holder
 - 4 storage drawers under the bed
 - 1 unit with 2 drawers in the lower section and a bookcase in the upper section
 - 1 desk with 2 flaps and 3-shelf bookcase
 - 1 wooden ottoman with storage locker
- Outboard :
 - 1 unit with storage in the lower section and bookcase in the upper section
 - Sofa with 2-shelf bookcase above and storage behind the seatback and under the seat
- 2 T60 opening deck hatches
- 2 PMMA fixed hull windows with 1 integrated T3 opening hull port

- Dressing :
 - Hanging lockers
 - 6 sliding shelves with leather insert and Plexiglas fiddle
 - 3 drawers inboard side
 - 2 drawers under hanging lockers
 - Trouser rack
 - 1 T60 opening deck hatch

Owner's bathroom:

- Corian® countertop (Clam Shell) with integrated double washbasin
- High-level locker with :
 - 3 mirrored doors and shelves behind each door
 - 4 x 3 storage cubbyholes
- Low-level locker with 3 drawers
- Electric freshwater toilet (Tecma)
- Separated shower with Corian® floor (Clam Shell), peripheral draining and toughened glass door
- Head shower and additional hand shower
- 1 T60 opening deck hatch
- 1 PMMA fixed hull window with 1 integrated T3 opening hull port

6 cabins - Galley up version



PORT HULL

Aft cabin:

- 2 single beds with side access (2.05 x 0.90 m/6'9" x 2'11") and slatted base, sliding and convertible into one double bed
- 1 central bedside table with stainless steel and leather insert
- 1 drawer under each bed
- 1 hanging locker - outboard side
- 1 storage locker- inboard side
- 1 T60 opening deck hatch
- 1 PMMA fixed hull window with 1 integrated T3 opening hull porthole

Aft bathroom:

- Corian® countertop (Clam Shell) with integrated washbasin
- Hot and cold mixer tap
- High-level locker with 1 mirrored door and 3 cubbyholes
- Low-level locker with 2 doors
- Separated shower with Corian® floor (Clam Shell), peripheral draining and toughened glass swing doors
- Head shower and additional hand shower
- Electric freshwater toilet (Tecma)

Mid-ship cabin:

- 1 island double bed (2.05 x 1.67 m/6'9" x 5'6") with slatted base
- 2 storage drawers under the bed
- 2 bedside tables with coin tray and 2 drawers below
- 1 desk with flaps and shelves
- 1 leather chair (FRAG)
- 2 bedhead wall lamps
- 1 desk with flaps and shelves - outboard side
- 1 hanging locker and 1 storage unit on each side of the desk - outboard side
- 1 T60 opening deck hatch
- 1 PMMA fixed hull window with 1 integrated T3 opening hull porthole

Mid-ship bathroom:

- Corian® countertop (Clam Shell) with integrated composite washbasin
- Hot and cold mixer tap
- High-level locker with 1 mirrored door and 3 cubbyholes
- 2 doors low-level locker
- Separated shower with Corian® floor (Clam Shell), peripheral draining and toughened glass swing doors
- Head shower and additional hand shower
- Electric freshwater toilet (Tecma)
- 1 T60 opening deck hatch

Forward cabin:

- 1 island double bed (2.05 x 1.70 m/6'9" x 5'7") with slatted base
- 2 bedside tables with, on each side:
 - Coin tray and double glass-holder
 - 2 storage drawers
- 4 storage drawers under the bed
- Unit with storage behind flap and double hanging locker in the upper section and 2 doors with 2 shelves in the lower section
- Outboard side with:

- Desk with flap
- 3-shelf bookcase
- 7-door low-level unit with 2 levels of shelves
- 1 unit with double doors providing 6 storage spaces in the upper section and 3 drawers in the lower section
- 1 T60 opening deck hatch
- 1 fixed hull window with 1 integrated opening hull port
- Door providing direct access to bathroom

Forward cabin bathroom:

- Corian® countertop (Clam Shell) with integrated composite washbasin
- High-level locker with 1 mirrored door and 3 cubbyholes
- 2 low-level drawers
- Separated shower with Corian® floor (Clam Shell), peripheral draining and toughened glass swing doors
- Head shower and additional hand shower
- 1 T60 opening deck hatch
- Electric freshwater toilet (Tecma)

STARBOARD HULL

Aft cabin:

- 1 island double bed (2.05 x 1.67 m/6'9" x 5'6") with slatted base
- 2 storage drawers under the bed
- 2 bedside tables with coin tray and 2 drawers on each side
- Inboard :
 - 1 unit with hanging locker in the upper section and shelf in the lower section
 - Two 2-door low-level units with 1 shelf
 - 1 T60 opening deck hatch
 - 1 PMMA fixed hull window with 1 integrated T3 opening hull port
- Outboard :
 - 1 desk with 2 flaps and 3 shelves

- One 2-door low-level unit with shelves

Aft bathroom:

- Corian® countertop (Clam Shell) with integrated washbasin
- Hot and cold water mixer tap
- High-level locker with 1 mirrored door and 3 cubbyholes
- Low level storage unit with 2 drawers
- Separated shower with Corian® floor (Clam Shell), peripheral draining and toughened glass swing doors
- Head shower and additional hand shower
- Separated toilet :
 - 1 large storage unit with 2 mirrored doors with 4 shelves in the upper section and 2 drawers and 2 doors with shelves in the lower section
 - Electric freshwater toilet (Tecma)
- 1 PMMA fixed hull window with 1 integrated T3 opening hull port

Mid-ship cabin:

- 2 single beds with side access (2.05 x 0.90 m/6'9" x 2'11") and slatted base
- 1 central bedside table with leather and stainless steel insert
- 1 drawer under each bed
- 1 hanging locker – outboard side
- 1 storage unit – inboard side
- 1 T60 opening deck hatch
- 1 PMMA fixed hull window with 1 integrated T3 opening hull port

Mid-ship bathroom:

- Corian® countertop (Clam Shell) with integrated washbasin
- Hot and cold mixer tap
- High-level locker with 1 mirrored door
- 1-door low-level drawer
- Integrated shower with Corian® floor (Clam Shell), peripheral draining
- Head shower and additional hand shower

- 1 PMMA fixed hull window with 1 integrated T3 opening hull port
- Separated toilet, access from the cabin (independent) :
 - 1 storage unit
 - Electric freshwater toilet (Tecma)

Forward cabin:

- 1 island double bed (2.05 x 1.760 m/6'9" x 5'9") with slatted base
- 2 storage drawers under the bed
- 2 bedside tables with coin tray and drawers underneath
- 1 storage unit + bookshelves – outboard side
- 1 hanging locker – inboard side
- 1 T60 opening deck hatch
- 1 PMMA fixed hull window with 1 integrated T3 opening hull port

Forward cabin bathroom:

- Corian® countertop (Clam Shell) with integrated washbasin
- Hot and cold water mixer tap
- High-level locker with 1 mirrored door and 3 cubbyholes
- 2-door low-level drawer
- Separated shower with Corian® floor (Clam Shell), peripheral draining and toughened glass swing doors
- Head shower and additional hand shower
- Electric freshwater toilet (Tecma)
- 1 T60 opening deck hatch

Saloon - Hull Galley version



- Access from the aft cockpit through a wide glazed sliding door (overall dimensions 3.8 x 1.95 m/12'6" x 6'5" - opening dimensions 2.3 x 1.95 m/7'7" x 6'5")

TO PORT

- L-shaped sofa with 1 storage cubbyhole
- 4 leather chairs
- 1 high wooden table (2.2 x 1.7 m/7'3" x 5'7")
- 1 storage unit with top opening doors

ON STARBOARD

- U-shaped sofa with 3 storage cubbyholes
- 1 low table/ottoman, fabric covered (1.5 x 0.9 m/4'11" x 2'11")
- 1 storage unit

CENTRAL UNIT

- Cabinet with leather top, storage, bar equipment and sink in Corian® (Graylite), doors on each side

CHART TABLE

- Chart table equipped with electronics

- Dedicated seat
- Sliding desk with storage and leather top

PRIVATE LOUNGE

- 1 L-shaped sofa facing a 3 storage lockers unit
- Storage behind seat with top access and Plexiglas separations

Access to the forward cockpit by way of a glass door (PMMA)

4 cabins - Forward galley version



PORT HULL

Aft cabin:

- 2 single beds with side access (2.05 x 0.90 m/6'9" x 2'11") and slatted base, sliding and convertible into one double bed
- 1 central bedside table with stainless steel and leather insert
- 1 drawer under each bed
- 1 hanging locker - outboard side
- 1 storage locker- inboard side
- 1 T60 opening deck hatch
- 1 PMMA fixed hull window with 1 integrated T3 opening hull porthole

Aft bathroom:

- Corian® countertop (Clam Shell) with integrated washbasin
- Hot and cold mixer tap
- High-level locker with 1 mirrored door and 3 cubbyholes
- Low-level locker with 2 doors
- Separated shower with Corian® floor (Clam Shell), peripheral draining and toughened glass swing doors
- Head shower and additional hand shower

- Electric freshwater toilet (Tecma)

Mid-ship cabin:

- 1 island double bed (2.05 x 1.67 m/6'9" x 5'6") with slatted base
- 2 storage drawers under the bed
- 2 bedside tables with coin tray and 2 drawers below
- 1 desk with flaps and shelves
- 1 leather chair (FRAG)
- 2 bedhead wall lamps
- 1 desk with flaps and shelves - outboard side
- 1 hanging locker and 1 storage unit on each side of the desk - outboard side
- 1 T60 opening deck hatch
- 1 PMMA fixed hull window with 1 integrated T3 opening hull porthole

Mid-ship bathroom:

- Corian® countertop (Clam Shell) with integrated composite washbasin
- Hot and cold mixer tap
- High-level locker with 1 mirrored door and 3 cubbyholes
- Low-level locker with 2 doors
- Separated shower with Corian® floor (Clam Shell), peripheral draining and toughened glass swing doors
- Head shower and additional hand shower
- Electric freshwater toilet (Tecma)
- 1 T60 opening deck hatch

Forward galley:

- Access from the port forward companionway
- Large opening deck hatch for direct access from the deck through a retractable electrical staircase
- 1 PMMA fixed hull window with 1 integrated T3 opening hull port

- Outboard :
 - Combined refrigerator/freezer with integrated icemaker (Samsung - Volume 396 L+124 L/105 US Gal+33 US Gal)
 - Corian® (Deep Mink) countertop with stainless steel double sink and hot and cold mixer tap
 - 2 doors locker under sink
 - 1 waste receptacle with access from above and door at front
 - 1 door low-level unit with shelves
 - 1 low-level unit with 4 drawers
 - High-level lockers with flaps
 - 1 PMMA fixed hull window with 1 integrated T3 opening hull port

- Inboard:
 - Corian® (Deep Mink) countertop
 - Corian® (Deep Mink) dining table with bench seat and storage
 - 1 x 4-burner induction hob 230V (Miele) and pan clamps
 - 1 electric oven (Miele)
 - 1 extractor hood (Electrolux)
 - High and low-level lockers with doors, shelves and drawers

Crew cabin

- 2 bunk beds (2.05 x 0.90 m/6'9" x 2'11") with slatted bases
- 1 drawer under the bed
- 1 hanging locker and 1 storage unit – inboard side
- 1 stowage unit capable of housing the washer/dryer (optional)
- 1 T60 opening deck hatch

Crew bathroom

- Corian® countertop (Deep Mink) with integrated washbasin
- Hot and cold mixer tap
- High-level locker with 1 mirrored door and 3 cubbyholes

- Low-level locker with 2 doors
- High- and low-level lockers
- Separated shower with Corian® floor (Deep Mink), peripheral draining
- Head shower and additional hand shower
- Electric freshwater toilet (Tecma)

STARBOARD HULL

Aft cabin:

- 1 island double bed (2.05 x 1.67 m/6'9" x 5'6") with slatted base
- 2 storage drawers under the bed
- 2 bedside tables with coin tray and 2 drawers on each side
- Inboard :
 - 1 unit with hanging locker in the upper section and shelf in the lower section
 - 2 low-level units with 2 doors and 1 shelf each
 - 1 T60 opening deck hatch
 - 1 PMMA fixed hull window with 1 integrated T3 opening hull port
- Outboard :
 - 1 desk with 2 flaps and 3 shelves
 - Low-level unit with 2 doors and shelves

Aft bathroom:

- Corian® countertop (Clam Shell) with integrated washbasin
- Hot and cold water mixer tap
- High-level locker with 1 mirrored door and 3 cubbyholes
- Low level storage unit with 2 drawers
- Separated shower with Corian® floor (Clam Shell), peripheral draining and toughened glass swing doors
- Head shower and additional hand shower
- Separated toilet :
 - 1 large storage unit with 2 mirrored doors with 4 shelves in the upper section and 2 drawers and 2 doors with shelves in the lower section

- Electric freshwater toilet (Tecma)
- 1 PMMA fixed hull window with 1 integrated T3 opening hull port

Owner's suite:

- Access from the private lounge. Wooden sliding door
- Inboard :
 - 1 island double bed (2.05 x 1.80 m/6'9" x 5'11") with slatted base
 - 2 bedside tables with coin tray and 2 drawers on each side
 - Coin tray and double glass-holder
 - 4 storage drawers under the bed
 - 1 unit with 2 drawers in the lower section and a bookcase in the upper section
 - 1 desk with 2 flaps, 3-shelf bookcase
 - 1 wooden ottoman with storage locker
- Outboard :
 - 1 unit with storage in the lower section and bookcase in the upper section
 - Sofa with 2-shelf bookcase above and storage behind the seatback and under the seat
- 2 T60 opening deck hatches
- 2 PMMA fixed hull windows with 1 integrated T3 opening hull port
- Dressing :
 - Hanging lockers
 - 6 sliding shelves with leather insert and Plexiglas fiddle
 - 3 drawers inboard side
 - 2 drawers under hanging lockers
 - Trouser rack
 - 1 T60 opening deck hatch

Owner's bathroom:

- Corian® countertop (Clam Shell) with integrated double washbasin
- High-level locker with :

- 3 mirrored doors and shelves behind each door
- 4 x 3 storage cubbyholes
- 3-drawer low-level locker
- Electric freshwater toilet (Tecma)
- Separated shower with Corian® floor (Clam Shell), peripheral draining and toughened glass door
- Head shower and additional hand shower
- 1 T60 opening deck hatch
- 1 PMMA fixed hull window with 1 integrated T3 opening hull port

5 cabins - Forward galley version



PORT HULL

Aft cabin:

- 2 single beds with side access (2.05 x 0.90 m/6'9" x 2'11") and slatted base, sliding and convertible into one double bed
- 1 central bedside table with stainless steel and leather insert
- 1 drawer under each bed
- 1 hanging locker – outboard side
- 1 storage locker– inboard side
- 1 T60 opening deck hatch
- 1 PMMA fixed hull window with 1 integrated T3 opening hull porthole

Aft bathroom:

- Corian® countertop (Clam Shell) with integrated washbasin
- Hot and cold mixer tap
- High-level locker with 1 mirrored door and 3 cubbyholes
- Low-level locker with 2 doors
- Separated shower with Corian® floor (Clam Shell), peripheral draining and toughened glass swing doors
- Head shower and additional hand shower
- Electric freshwater toilet (Tecma)

Mid-ship cabin:

- 1 island double bed (2.05 x 1.67 m/6'9" x 5'6") with slatted base
- 2 storage drawers under the bed
- 2 bedside tables with coin tray and 2 drawers below
- 1 desk with flaps and shelves
- 1 leather chair (FRAG)
- 2 bedhead wall lamps
- 1 desk with flaps and shelves - outboard side
- 1 hanging locker and 1 storage unit on each side of the desk - outboard side
- 1 T60 opening deck hatch
- 1 PMMA fixed hull window with 1 integrated T3 opening hull porthole

Mid-ship bathroom:

- Corian® countertop (Clam Shell) with integrated composite washbasin
- Hot and cold mixer tap
- High-level locker with 1 mirrored door and 3 cubbyholes
- Low-level locker with 2 doors
- Separated shower with Corian® floor (Clam Shell), peripheral draining and toughened glass swing doors
- Head shower and additional hand shower
- Electric freshwater toilet (Tecma)
- 1 T60 opening deck hatch

Forward galley:

- Access from the port forward companionway
- Large opening deck hatch (T60) for direct access from the deck through a retractable electrical staircase
- 1 PMMA fixed hull window with 1 integrated T3 opening hull port

- Outboard :
 - Combined refrigerator/freezer with integrated icemaker (Samsung - Volume 396 L+124 L/105 US Gal+33 US Gal)

- Corian® (Deep Mink) countertop with stainless steel double sink and hot and cold mixer tap
 - 2 doors locker under sink
 - 1 waste receptacle with access from above and door at front
 - Low-level unit with 1 door and shelves
 - Low-level unit with 4 drawers
 - High-level lockers with flaps
 - 1 PMMA fixed hull window with 1 integrated T3 opening hull port
- Inboard:
 - Corian® (Deep Mink) countertop
 - Corian® (Deep Mink) dining table with bench seat and storage
 - 1 x 4-burner induction hob 230V (Miele) and pan clamps
 - 1 electric oven (Miele)
 - 1 extractor hood (Electrolux)
 - High and low-level lockers with doors, shelves and drawers

Crew cabin

- 2 bunk beds (2.05 x 0.90 m/6'9" x 2'11") with slatted bases
- 1 drawer under the bed
- 1 hanging locker and 1 storage unit – inboard side
- 1 stowage unit capable of housing the washer/dryer (optional)
- 1 T60 opening deck hatch

Crew bathroom

- Corian® countertop (Deep Mink) with integrated washbasin
- Hot and cold mixer tap
- High-level locker with 1 mirrored door and 3 cubbyholes
- Low-level locker with 2 doors
- High- and low-level lockers
- Separated shower with Corian® floor (Deep Mink), peripheral draining
- Head shower and additional hand shower

- Electric freshwater toilet (Tecma)

STARBOARD HULL

Aft cabin:

- 1 island double bed (2.05 x 1.67 m/6'9" x 5'6") with slatted base
- 2 storage drawers under the bed
- 2 bedside tables with coin tray and 2 drawers on each side
- Inboard :
 - 1 unit with hanging locker in the upper section and shelf in the lower section
 - Two 2-door low-level units with 1 shelf
 - 1 T60 opening deck hatch
 - 1 PMMA fixed hull window with 1 integrated T3 opening hull port
- Outboard :
 - 1 desk with 2 flaps and 3 shelves
 - One 2-door low-level unit with shelves

Aft bathroom:

- Corian® countertop (Clam Shell) with integrated washbasin
- Hot and cold water mixer tap
- High-level locker with 1 mirrored door and 3 cubbyholes
- Low level storage unit with 2 drawers
- Separated shower with Corian® floor (Clam Shell), peripheral draining and toughened glass swing doors
- Head shower and additional hand shower
- Separated toilet :
 - 1 large storage unit with 2 mirrored doors with 4 shelves in the upper section and 2 drawers and 2 doors with shelves in the lower section
 - Electric freshwater toilet (Tecma)
- 1 PMMA fixed hull window with 1 integrated T3 opening hull port

Mid-ship cabin:

- 2 single beds with side access (2.05 x 0.90 m/6'9" x 2'11") and slatted base
- 1 central bedside table with leather and stainless steel insert
- 1 drawer under each bed
- 1 hanging locker – outboard side
- 1 storage unit – inboard side
- 1 T60 opening deck hatch
- 1 PMMA fixed hull window with 1 integrated T3 opening hull port

Mid-ship bathroom:

- Corian® countertop (Clam Shell) with integrated washbasin
- Hot and cold mixer tap
- High-level locker with 1 mirrored door
- 1-door low-level drawer
- Integrated shower with Corian® floor (Clam Shell), peripheral draining
- Head shower and additional hand shower
- 1 PMMA fixed hull window with 1 integrated T3 opening hull port
- Separated toilet, access from the cabin (independent) :
 - 1 storage unit
 - Electric freshwater toilet (Tecma)

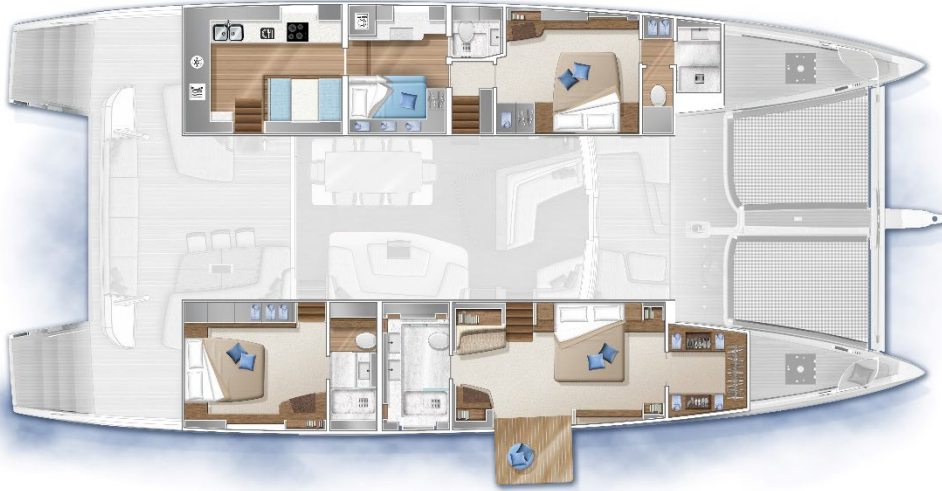
Forward cabin:

- 1 island double bed (2.05 x 1.760 m/6'9" x 5'9") with slatted base
- 2 storage drawers under the bed
- 2 bedside tables with coin tray and drawers underneath
- 1 storage unit and bookshelves – outboard side
- 1 hanging locker – inboard side
- 1 T60 opening deck hatch
- 1 PMMA fixed hull window with 1 integrated T3 opening hull port

Forward cabin bathroom:

- Corian® countertop (Clam Shell) with integrated washbasin
- Hot and cold water mixer tap
- High-level locker with 1 mirrored door and 3 cubbyholes
- 2-door low-level drawer
- Separated shower with Corian® floor (Clam Shell), peripheral draining and toughened glass swing doors
- Head shower and additional hand shower
- Electric freshwater toilet (Tecma)
- 1 T60 opening deck hatch

3 cabins - Aft galley version



PORT HULL

Galley:

- Access from the aft cockpit or from the saloon by way of the crew cabin
- 1 T60 opening deck hatch
- 1 PMMA fixed hull window with 1 integrated T3 opening hull port

- Outboard:
 - Corian® (Deep Mink) countertop with double stainless steel with hot and cold mixer tap
 - 1 waste receptacle with access from above and door at front
 - 1 x 1-door low-level unit with shelves
 - 1 low-level unit with 4 drawers
 - 1 x 4-burner induction hob, 230V, (Miele), and pan clamps
 - 1 Electric oven (Miele), 1 drawer below
 - 1 extractor hood (Electrolux)
 - Storage unit for bottles
 - High level lockers with flaps

- Aft bulkhead :
 - Combined refrigerator/freezer with integral icemaker (Samsung - Volume 396 L+124 L/105 US Gal+33 US Gal)
 - 1 storage locker under the floor
 - To the left of the refrigerator:
 - 1 storage unit with :
 - 2 high level locker
(Replaced in case of optional coffee machine/ Microwave)
 - 2 drawers in the lower section
 - 1 storage locker in the lower section

- Inboard :
 - 1 storage unit with:
 - 1 large locker with 1 door and 3 shelves in the upper section
 - 1 storage compartment with flap in the lower section
 - Storage under the companionway stairs
 - Dinette with:
 - Corian® (Deep Mink) dining table with stainless steel pedestal
 - 2 facing bench seats with storage under settees
 - 2 lockers with doors and shelves
 - Open shelves (deleted in case of optional TV)
 - 2 high-level lockers with flaps

Crew cabin:

- Access from the gangway or the galley
- Inboard :
 - 2 bunk beds with side access (2.05 x 0.90 m/6'9" x 2'11") and slatted base
 - Storage along the bulkhead with sliding doors
 - 1 drawer under the bed
 - 1 unit with 1 hanging locker in the upper section and 1 locker with 2 shelves in the lower section

- Outboard :
 - 1 unit with 1 door and 3 shelves in the upper section and 1 door and 2 shelves in the lower section (replaced in case of optional washing machine or dryer or washer-dryer)
 - 1 desk with 1 flap and seat
 - 1 x 1-door low-level locker
 - 3 high-level lockers with flaps
- 1 T60 opening deck hatch
- 1 PMMA fixed hull window with 1 integrated T3 opening hull port

Crew bathroom:

- Corian® countertop (Clam Shell) with integrated washbasin
- Hot and cold mixer tap
- High-level locker with 1 mirrored door and 3 cubbyholes
- Low-level locker with 2 doors
- Separated shower with Corian® floor (Clam Shell), peripheral draining and toughened glass swing doors
- Head shower and additional hand shower
- 1 T60 opening deck hatch
- Electric freshwater toilet (Tecma)
- Corian® floor (Clam Shell)

Forward cabin:

- 1 island double bed (2.05 x 1.70 m/6'9" x 5'7") with slatted base
- 2 bedside tables with, on each side:
 - Coin tray and double glass-holder
 - 2 storage drawers
- 4 storage drawers under the bed
- Unit with storage behind flap and double hanging locker in the upper section and 2 doors with 2 shelves in the lower section
- Outboard side with:
 - Desk with flap

- 3-shelf bookcase
- Low-level unit with 7 doors and 2 levels of shelves
- 1 unit with double doors providing 6 storage spaces in the upper section and 3 drawers in the lower section
- 1 T60 opening deck hatch
- 1 fixed hull window with 1 integrated opening hull port
- Door providing direct access to bathroom

Forward cabin bathroom:

- Corian® countertop (Clam Shell) with integrated composite washbasin
- High-level locker with 1 mirrored door and 3 cubbyholes
- 2 low-level drawers
- Separated shower with Corian® floor (Clam Shell), peripheral draining and toughened glass swing doors
- Head shower and additional hand shower
- 1 T60 opening deck hatch
- Electric freshwater toilet (Tecma)

STARBOARD HULL

Aft cabin:

- 1 island double bed (2.05 x 1.67 m/6'9" x 5'6") with slatted base
- 2 storage drawers under the bed
- 2 bedside tables with coin tray and 2 drawers on each side
- Inboard :
 - 1 unit with hanging locker in the upper section and shelf in the lower section
 - Two 2-door low-level units with 1 shelf
 - 1 T60 opening deck hatch
 - 1 PMMA fixed hull window with 1 integrated T3 opening hull port
- Outboard :
 - 1 desk with 2 flaps and 3 shelves
 - One 2-door low-level unit with shelves

Aft bathroom:

- Corian® countertop (Clam Shell) with integrated washbasin
- Hot and cold water mixer tap
- High-level locker with 1 mirrored door and 3 cubbyholes
- Low level storage unit with 2 drawers
- Separated shower with Corian® floor (Clam Shell), peripheral draining and toughened glass swing doors
- Head shower and additional hand shower
- Separated toilet :
 - 1 large storage unit with 2 mirrored doors with 4 shelves in the upper section and 2 drawers and 2 doors with shelves in the lower section
 - Electric freshwater toilet (Tecma)
- 1 PMMA fixed hull window with 1 integrated T3 opening hull port

Owner's suite:

- Access from the private lounge. Wooden sliding door
- Inboard :
 - 1 island double bed (2.05 x 1.80 m) with slatted base
 - 2 bedside tables with coin tray and 2 drawers on each side
 - Coin tray and double glass-holder
 - 4 storage drawers under the bed
 - 1 unit with 2 drawers in the lower section and a bookcase in the upper section
 - 1 desk with 2 flaps, 3-shelf bookcase
 - 1 wooden ottoman with storage locker
- Outboard :
 - 1 unit with storage in the lower section and bookcase in the upper section
 - Sofa with 2-shelf bookcase above and storage behind the seatback and under the seat
- 2 T60 opening deck hatches
- 2 PMMA fixed hull windows with 1 integrated T3 opening hull port

- Dressing :
 - Hanging lockers
 - 6 sliding shelves with leather insert and Plexiglas fiddle
 - 3 drawers inboard side
 - 2 drawers under hanging lockers
 - Trouser rack
 - 1 T60 opening deck hatch

Owner's bathroom:

- Corian® countertop (Clam Shell) with integrated double washbasin
- High-level locker with :
 - 3 mirrored doors and shelves behind each door
 - 4 x 3 storage cubbyholes
- 3-drawer low-level locker
- Electric freshwater toilet (Tecma)
- Separated shower with Corian® floor (Clam Shell), peripheral draining and toughened glass door
- Head shower and additional hand shower
- 1 T60 opening deck hatch
- 1 PMMA fixed hull window with 1 integrated T3 opening hull port

4 cabins - Aft galley version



PORT HULL

Galley:

- Access from the aft cockpit or from the saloon by way of the crew cabin
- 1 T60 opening deck hatch
- 1 PMMA fixed hull window with 1 integrated T3 opening hull port

- Outboard:
 - Corian® (Deep Mink) countertop with double stainless steel with hot and cold mixer tap
 - 1 waste receptacle with access from above and door at front
 - 1 x 1-door low-level unit with shelves
 - 1 low-level unit with 4 drawers
 - 1 x 4-burner induction hob, 230V, (Miele), and pan clamps
 - 1 Electric oven (Miele), 1 drawer below
 - 1 extractor hood (Electrolux)
 - Storage unit for bottles
 - High level lockers with flaps

- Aft bulkhead :
 - Combined refrigerator/freezer with integral icemaker (Samsung - Volume 396 L+124 L/105 US Gal+33 US Gal)
 - 1 storage locker under the floor
 - To the left of the refrigerator:
 - 1 storage unit with :
 - 2 high level locker
(Replaced in case of optional coffee machine/ Microwave)
 - 2 drawers in the lower section
 - 1 storage locker in the lower section

- Inboard :
 - 1 storage unit with:
 - 1 large locker with 1 door and 3 shelves in the upper section
 - 1 storage compartment with flap in the lower section
 - Storage under the companionway stairs
 - Dinette with:
 - Corian® (Deep Mink) dining table with stainless steel pedestal
 - 2 facing bench seats with storage under settees
 - 2 lockers with doors and shelves
 - Open shelves (deleted in case of optional TV)
 - 2 high-level lockers with flaps

Crew cabin:

- Access from the gangway or the galley
- Inboard :
 - 2 bunk beds with side access (2.05 x 0.90 m/6'9" x 2'11") and slatted base
 - Storage along the bulkhead with sliding doors
 - 1 drawer under the bed
 - 1 unit with 1 hanging locker in the upper section and 1 locker with 2 shelves in the lower section

- Outboard :
 - 1 unit with 1 door and 3 shelves in the upper section and 1 door and 2 shelves in the lower section (replaced in case of optional washing machine or dryer or washer-dryer)
 - 1 desk with 1 flap and seat
 - Low-level locker with one door
 - 3 high-level lockers with flaps
- 1 T60 opening deck hatch
- 1 PMMA fixed hull window with 1 integrated T3 opening hull port

Crew bathroom:

- Corian® countertop (Clam Shell) with integrated washbasin
- Hot and cold mixer tap
- High-level locker with 1 mirrored door and 3 cubbyholes
- 2-door low-level locker
- Separated shower with Corian® floor (Clam Shell), peripheral draining and toughened glass swing doors
- Head shower and additional hand shower
- 1 T60 opening deck hatch
- Electric freshwater toilet (Tecma)
- Corian® floor (Clam Shell)

Forward cabin:

- 1 island double bed (2.05 x 1.70 m/6'9" x 5'7") with slatted base
- 2 bedside tables with, on each side:
 - Coin tray and double glass-holder
 - 2 storage drawers
- 4 storage drawers under the bed
- Unit with storage behind flap and double hanging locker in the upper section and 2 doors with 2 shelves in the lower section
- Outboard side with:
 - Desk with flap

- 3-shelf bookcase
- Low-level unit with 7 doors and 2 levels of shelves
- 1 unit with double doors providing 6 storage spaces in the upper section and 3 drawers in the lower section
- 1 T60 opening deck hatch
- 1 fixed hull window with 1 integrated opening hull port
- Door providing direct access to the bathroom

Forward cabin bathroom:

- Corian® countertop (Clam Shell) with integrated composite washbasin
- High-level locker with 1 mirrored door and 3 cubbyholes
- 2 low-level drawers
- Separated shower with Corian® floor (Clam Shell), peripheral draining and toughened glass swing doors
- Head shower and additional hand shower
- 1 T60 opening deck hatch
- Electric freshwater toilet (Tecma)

STARBOARD HULL

Aft cabin:

- 1 island double bed (2.05 x 1.67 m/6'9" x 5'6") with slatted base
- 2 storage drawers under the bed
- 2 bedside tables with coin tray and 2 drawers on each side
- Inboard :
 - 1 unit with hanging locker in the upper section and shelf in the lower section
 - 2 low-level units with 2 doors and 1 shelf each
 - 1 T60 opening deck hatch
 - 1 PMMA fixed hull window with 1 integrated T3 opening hull port
- Outboard :
 - 1 desk with 2 flaps and 3 shelves
 - low-level unit with 2 doors and shelves

Aft bathroom:

- Corian® countertop (Clam Shell) with integrated washbasin
- Hot and cold water mixer tap
- High-level locker with 1 mirrored door and 3 cubbyholes
- Low level storage unit with 2 drawers
- Separated shower with Corian® floor (Clam Shell), peripheral draining and toughened glass swing doors
- Head shower and additional hand shower
- Separated toilet :
 - 1 large storage unit with 2 mirrored doors with 4 shelves in the upper section and 2 drawers and 2 doors with shelves in the lower section
 - Electric freshwater toilet (Tecma)
- 1 PMMA fixed hull window with 1 integrated T3 opening hull port

Mid-ship cabin:

- 2 single beds with side access (2.05 x 0.90 m/6'9" x 2'11") and slatted base
- 1 central bedside table with leather and stainless steel insert
- 1 drawer under each bed
- 1 hanging locker – outboard side
- 1 storage unit – inboard side
- 1 T60 opening deck hatch
- 1 PMMA fixed hull window with 1 integrated T3 opening hull port

Mid-ship bathroom:

- Corian® countertop (Clam Shell) with integrated washbasin
- Hot and cold mixer tap
- High-level locker with 1 mirrored door
- 1-door low-level drawer
- Integrated shower with Corian® floor (Clam Shell), peripheral draining
- Head shower and additional hand shower
- 1 PMMA fixed hull window with 1 integrated T3 opening hull port

- Separated toilet, access from the cabin (independent) :
 - 1 storage unit
 - Electric freshwater toilet (Tecma)

Forward cabin:

- 1 island double bed (2.05 x 1.760 m/6'9" x 5'9") with slatted base
- 2 storage drawers under the bed
- 2 bedside tables with coin tray and drawers underneath
- 1 storage unit + bookshelves – outboard side
- 1 hanging locker – inboard side
- 1 T60 opening deck hatch
- 1 PMMA fixed hull window with 1 integrated T3 opening hull port

Forward cabin bathroom:

- Corian® countertop (Clam Shell) with integrated washbasin
- Hot and cold water mixer tap
- High-level locker with 1 mirrored door and 3 cubbyholes
- 2-door low-level drawer
- Separated shower with Corian® floor (Clam Shell), peripheral draining and toughened glass swing doors
- Head shower and additional hand shower
- Electric freshwater toilet (Tecma)
- 1 T60 opening deck hatch



162, quai de Brazza
CS 81217
33072 Bordeaux Cedex - France
Tel.: +33 5 57 80 92 80
Email: info@cata-lagoon.com
www.cata-lagoon.com