



# Technical specifications

July 2020



**Contents**

1. Technical characteristics .....	2
2. Construction .....	3
3. Mooring and anchoring .....	3
4. Propulsion and steering gear .....	3
5. Fuel system .....	3
6. Freshwater system .....	4
7. Grey water and black water systems .....	4
8. Bilge pump system .....	5
9. Electrical system .....	5
10. Lighting .....	7
11. Ventilation and extraction system .....	7
12. Deck layout .....	7
13. Equipment and finishes and interior design .....	11
13.4. a. Lateral galley: salon .....	14
13.4. b. Lateral galley: 4-cabin owner's version .....	16
13.4. c. Lateral galley: 5-cabin version .....	21
13.5. a. Panoramic galley: salon .....	27
13.5. b. Panoramic galley: 5-cabin owner's version .....	29
13.5. c. Panoramic galley: 6-cabin version .....	34

## 1. Technical characteristics

Length overall	20,15 m / 66'1"
Waterline length	20 m / 65'7"
Maximum beam	10 m / 32'10"
Draft	1,15 m / 3'9"
Light displacement (CE)	43 T / 94 800 lbs
Diesel capacity	4 x 1,375 L / 4 x 302 US gal
Fresh water capacity	2 x 500 L / 2 x 132 US gal
Grey water tank (option)	510 L / 135 US gal
Black water tank	510 L / 135 US gal
Engines	Standard: 2 x D6 340 hp VOLVO Option: 2 x 440 hp YANMAR
Architects	VPLP Design
Exterior design	Patrick le Quément
Interior design	Nauta Design
Design Category	A: 14 - B: 18 - C: 24 - D: 40

## 2. Construction

- Hull, deck, nacelle and coachroof in infused monolithic composite and balsa sandwich infused with anti-osmotic and polyester resins
- Hull bottoms and keels in monolithic infused laminate

## 3. Mooring and anchoring

- Anchor chain path integrated into forward platform
- 1 Electric windlass 2000W - 24V [QUICK]. Horizontal gypsy (14mm chain), vertical capstan. Corded remote control plus fixed remote control and chain counter at main helm station to starboard
- Chain locker to starboard of windlass
- 10 Mooring cleats + 1 secondary anchoring cleat
- 2 fairleads

## 4. Propulsion and steering gear

- Standard engines: 2 x 340 hp Common-rail VOLVO D6 diesels with propeller shafts
- Fixed propellers: [MAUCOUR] 4-blade Ø 610 x P505
- 2 spade rudders: foam sandwich and stainless-steel stock
- Raw water strainer
- Electric engine controls at starboard helm station on flybridge
- Epoxy rudder tubes
- Self-aligning upper and lower rudder bearings
- Hydraulic steering transmission (1 actuator per rudder)
- Hydraulic pump in engine compartment behind steering linkage
- Engine compartment ventilation
- Engine compartment soundproofing
- Optional engines: 2 x 440 hp YANMAR diesels with propeller shafts
- Fixed propellers: [BRUNTONS] 5-blade Ø 762 x P670

## 5. Fuel system

- 4 x 1,375-liter/4 x 302 US gal tanks (Total capacity: 5,500 liters/1,210 US gal)
- Fuel tank gauges on touch screen (general distribution panel – port companionway)
- Prefilter and water separator with sensor and filter
- 1 Fuel shutoff valve per tank

- Electric controls for port/starboard diesel transfer on deck next to filler neck

## **6. Freshwater system**

- 2 Freshwater tanks of 500 liters (2 x 132 US gal) (total capacity : 1,000 liters/264 US gal)
- Water tank gauges on touch screen (general distribution panel – port companionway)
- 2 Freshwater [JOHNSON] pressure pumps 24V 2x36l/m (2 x 9.5 US gal/min)
- 2 x 100-liter (2 x 26 US gal) water heaters - 230V immersion element & engine heat exchanger
- Fresh water filler necks with failsafe system on deck
- 1 Freshwater outlet point on starboard sugarscoop
- 1 Freshwater/seawater deck wash pump forward cockpit
- 1 Freshwater deck wash pump on starboard sugarscoop

## **7. Grey water and black water systems**

### **7.1. BLACK WATER SYSTEM (STANDARD)**

- Electric (24V) fresh water WC [TECMA Silence Plus]
- Underfloor black water tanks: 2 x 135 liters forward and 2 x 120 liters aft (2x35 US gal and 2 x 31 US gal) (total capacity: 510 liters/134 US gal)
- Water tank gauges on touch screen (general distribution panel – port companionway)
- Solenoid valve for emptying black water tanks. Centralized controls (general distribution panel – port companionway)

### **7.2. GREY WATER SYSTEM (OPTION)**

- Shower/washbasin and galley sink drained to grey water tank and automatic pumps integrated into shower
- Underfloor grey water tanks: 2 x 135 liters and 2 x 120 liters (2x35 US gal and 2 x 31 US gal) (total capacity: 500 liters/132 US gal)
- Water tank gauges on touch screen (general distribution panel – port companionway)
- Remote tank emptying from general distribution panel (port companionway)
- Rainwater drains directly into the sea

## 8. Bilge pump system

- Self-bailing forward and aft cockpits in accordance with CE standards
- 2 manual bilge pumps (1 in each hull) operated from the abandon-ship station to starboard in the cockpit
- 2 manual bilge pumps (1 in each forepeak) operated from the forward lockers for bailing the forepeaks
- 1 electric bilge pump with automatic float switch and manual override + bilge sump level alarm in each engine compartment
- Alarms and controls:
  - Audible alarm at the chart table and on the flybridge
  - Control panels in the salon (general distribution panel - port companionway) and at the main helm station on the flybridge

## 9. Electrical system

### 9.1. ELECTRIC PANELS

- Main AC panels in port companionway
- Main DC panels in starboard companionway
- Secondary AC & DC electrical panels installed in different areas for multiplexing functions

### 9.2. 230V AC, 50Hz SOURCES

- Shore power: 63 A as standard
- Engine alternators: 2 x VOLVO 110 A 24V
- Inverter: VICTRON 2000 VA 24V/230V
- Inverter: (option, in lieu of standard) : VICTRON 2 x 5000 VA 24/230V
- Generators:
  - ONAN 13.5 kVA 230V 50Hz (standard - starboard engine compartment)
  - ONAN 19 kVA 230V 50Hz (upgrade from standard - starboard engine compartment)
  - ONAN 135 kVA 230V 50Hz (option - port engine compartment)

### 9.3. 24V DC SOURCES

- Batteries:
  - 6 Service batteries 1050Ah / 24V - GEL
  - 2 Engine starter batteries 75A 12V
  - 1 Battery shut-off (house battery bank) in the forward port companionway
- Charger: 100A 230V [CATS POWER DESIGN]

## 9.4. DISTRIBUTION 230V AC

- BUS A
  - Sockets
  - Sockets in technical compartments (engine rooms)
  - Engine starting battery charger
  - Electrical appliances in the galley
    - Oven
    - Hob
    - Extractor hood
    - Dishwasher (option)
    - Microwave oven (option)
    - Coffeemaker (option)
    - Washing machine (option)
    - Dryer (option)
    - Washer-dryer (option)
- BUS B
  - Service bank battery chargers
    - 100A (Standard)
    - 2 x 100A additional (option)
- BUS C
  - Air heater (air-conditioning option)
- BUS D
  - Standard combined refrigerator in the galley
  - Hi-Fi and video (option)

## 9.5. 230 V SOCKETS\*

- Salon (lateral galley), 6 sockets in total:
  - Port: 1 in the sofa base + 2 in the cabinet
  - Starboard: 2 in the sofa base
  - Chart table: 1
- Salon (panoramic galley), 4 sockets in total:
  - Starboard: 2 in the sofa base + 1 in the cabinet
  - Chart table: 1
- Cabins: 1 socket per bedside unit + 1 in bed base
- Guest bathrooms: 1 socket
- Owner's bathroom: 2 sockets
- Single bunk forepeak (option): 1 socket
- 2 bunk beds forepeak (option): 2 sockets

(\*) Each 230V socket includes a USB socket (except in the furniture bases and galley)

## 10. Lighting

### 10.1. ENGINE COMPARTMENT

- 2 Touch-activated LED lights

### 10.2. INTERIOR

- Ceiling lights: LED spots [iGuzzini] and peripheral LED striplights
- LED bedside lights and desk light and chart table light [Mini Tolomeo Artemide]
- Indirect lighting in all areas: LED striplights

### 10.3. EXTERIOR

- Aft cockpit lighting: LED striplights
- Courtesy lighting:
  - LED striplights beneath sugarscoop steps
  - LED lights on bench seats (cockpit, main deck and flybridge)
  - Push-pull lights on aft beam and in forward cockpit

## 11. Ventilation and extraction system

### 11.1. INTERIOR VENTILATION

- Each cabin and each bathroom have at least one source of natural ventilation

### 11.2. ENGINE COMPARTMENT VENTILATION

- 2 x 24V DC electric fans
- Control of the engine compartment ventilation system connected to each engine

## 12. Deck layout

### 12.1. DECK

- Aft cockpit sole, sugarscoops and forward cockpit in teak
- Deck hatches, bay window and companionways:
  - 11 Lewmar T44 flush (12 hatches on the 6-cabines/6-bathroom version)
  - 2 Lewmar T60 flush in forepeaks
  - 2 aft companionways with electric lock (1 on the 6-cabines/6-bathroom version)
  - Sliding bay window (open dimensions 2.3 x 1.95 m/7'7" x 6'5")
- Safety:
  - Composite bulwark 120mm (4¾")
  - Stanchions H 780 mm (30¾")
  - 3 lateral and forward rows of guardwires
  - Retractable guardwires at sugarscoops



- Forward pulpits with wood seats
- Gangway door

## 12.2. AFT PLATFORM AND SUGARSCOOPS

- Stainless steel foldable and removable bathing ladder with handles ladder to port
- Hot/cold shower head to port
- Optional second ladder and second shower to starboard

## 12.3. AFT COCKPIT

- Cockpit flush-decked with the salon
- Starboard:
  - L-shaped bench seat with 2 storage lockers and technical access (abandon-ship station)
  - Teak table 2.2 x 1.1m (7'3" x 3'7")
  - 3 Exterior seats [TRIBU – Regista – wengé/wengé]
  - Sunbathing area
- Port: BAR unit
  - Sink beneath horizontal cover
  - Removable wood serving table
  - Cup/glass holder
  - Plexiglass open storage
  - Cockpit refrigerator 80L (2.8 cu ft) 24V
  - Storage behind doors with shelves (option: ice-maker)
  - Trash can access from above
- Aft:
  - Wide seating on aft beam with liferaft storage space
  - Lateral fittings to port and starboard:
    - Cup/glass holder
    - Push pull light
    - Storage beneath horizontal cover to port (option: Grill)
    - Ice-Maker beneath horizontal cover to starboard
- Under-floor lockers in central nacelle:
  - 2 storage lockers aft
  - 1 large central locker

## 12.4. FORWARD COCKPIT

- Access from the salon via the glazed door
- 2 seating areas with 1 storage locker beneath port seat and technical equipment access to starboard
- Open storage and cup/glass holder to starboard

- Sunbathing areas to port and starboard

### 12.5. FOREDECK

- 4 storage lockers, of which one is the chain locker
- Large forward platform in teak
- 2 forward pulpits with wood seat

### 12.6. FOREPEAKS

- Forepeaks with access through key-lockable T60 deck hatches
- Sail locker fittings:
  - Stainless-steel ladder
  - Floor
  - Painted white

### OPTIONS

- Forepeak fitted out with single bunk
- Forepeak fitted out with 2 bunk beds

### 12.7. FLYBRIDGE

- Access from the cockpit via mirror-polished stainless-steel stairs with teak treads
- Electric closing system
- Central helm station forward with:
  - Large bench seat/L-shaped sunbathing area
  - Cushions: seatbase and backrest (Fabric: SUNBRELLA® Natte Linen Chalk]
  - Leather-covered steering wheel
  - Power-assisted steering (electric and hydraulic system)
  - Composite console for navigation instruments
  - Compass
  - Electric engine controls and engine panels
  - Windlass controls and chain counter
  - Control panel lighting
  - Unit with 3 cubbyholes
  - Glass/cup holder and storage
- Large port L-shaped bench seat
- Port: BAR unit
  - Sink beneath horizontal cover
  - Corian® [Warm Grey] counter top
  - Cup/glass holders in black plexiglass beneath horizontal cover
  - Open plexiglass storage, (option lifting electric bar)
  - 80-Liter (2.8 cu ft) refrigerator

- Storage behind doors with shelves (option: ice-maker)
- Trash can access from above

## 13. Equipment and finishes and interior design

### 13.1. VERSION:

- Lateral galley:
  - Owner's 4-cabin/4-bathroom version
  - 5-cabin/5-bathroom version
- Panoramic galley:
  - Owner's 5-cabin/5-bathroom version
  - 6-cabin/6-bathroom version

### 13.2. INTERIOR FINISHES:

#### Standard:

- Furniture, recesses and bulkheads: Alpi Walnut (UV finish)
- Floors: Asburgo (floors)
- Galley countertops: Corian® - Warm Grey
- Countertops and flooring in bathrooms: Corian® - Clam Shell
- Leatherette inserts: Bison
- Coachroof headlining: Meteor & Macadamia
- Hull linings: Silver
- Bunk surround fabric: Sterling
- Leather chairs [salon: x3, cabins: x1 per desk]: FRAG - Model: Lily (Color: Ivory)

#### Options:

##### - WALNUT

#### Salon and cabins:

- Furniture and bulkheads: Alpi Walnut (Hollow pore finish)
- Recesses: Fenix Gray
- Floors: Asburgo
- Leatherette inserts: Bison
- Coachroof headlining: Meteor & Macadamia
- Hull linings: Silver
- Bunk surround fabric: Sterling
- Leather chairs [salon: x3, cabins: x1 per desk]: FRAG - Model: Lily (Color: Ivory)

#### Galley:

- Furniture and bulkheads: Alpi Walnut (Hollow pore finish)
- High-level units: white lacquer
- Floors: Asburgo
- Countertops: Corian® - Warm Grey

## Bathrooms and WC:

- Furniture and bulkheads: Alpi Walnut (Hollow pore finish)
- Recesses: Fenix Gray
- Floors: Asburgo and Corian® - Clam Shell
- Bathroom countertops: Corian® - Clam Shell

## - GRAY OAK

## Salon and cabins:

- Furniture and bulkheads: Alpi gray oak (Brushed/hollow pores finish)
- Recesses: Alpi smoked oak (Brushed/hollow pores finish)
- Floors: Alpi Kord Wengue
- Leatherette inserts: Bison
- Coachroof headlining: Meteor & Macadamia
- Hull linings: Sunbrella® Canvas Silver Grey - SJA 3741
- Bunk surround fabric: Truffle
- Leather chairs [salon: x3, cabins: x1 per desk]: FRAG - Model: Lily (Color: Taupe)

## Galley:

- Furniture and bulkheads: Alpi gray oak (Hollow pores finish)
- High-level units: white lacquer
- Floors: Alpi Kord Wengue
- Countertops: Corian® - Graylite

## Bathrooms and WC:

- Furniture and bulkheads: Alpi gray oak (Brushed/hollow pores finish)
- Recesses: Alpi smoked oak (Brushed/hollow pores finish)
- Floors: Alpi Kord Wengue and Corian® - Clam Shell
- Bathroom countertops: Corian® - Clam Shell

## - LIGHT OAK

## Salon and cabins:

- Furniture and bulkheads: Alpi light oak (Brushed/hollow pores finish)
- Recesses: Alpi smoked oak (Brushed/hollow pores finish)
- Floors: Alpi Kord Wengue
- Leatherette inserts: Bison
- Coachroof headlining: Meteor & Macadamia
- Hull linings: Sunbrella® Canvas Silver Grey - SJA 3741
- Bunk surround fabric: Truffle
- Leather chairs [salon: x3, cabins: x1 per desk]: FRAG - Model: Lily (Color: Taupe)

## Galley:

- Furniture and bulkheads: Alpi light oak (Hollow pores finish)
- High-level units: white lacquer

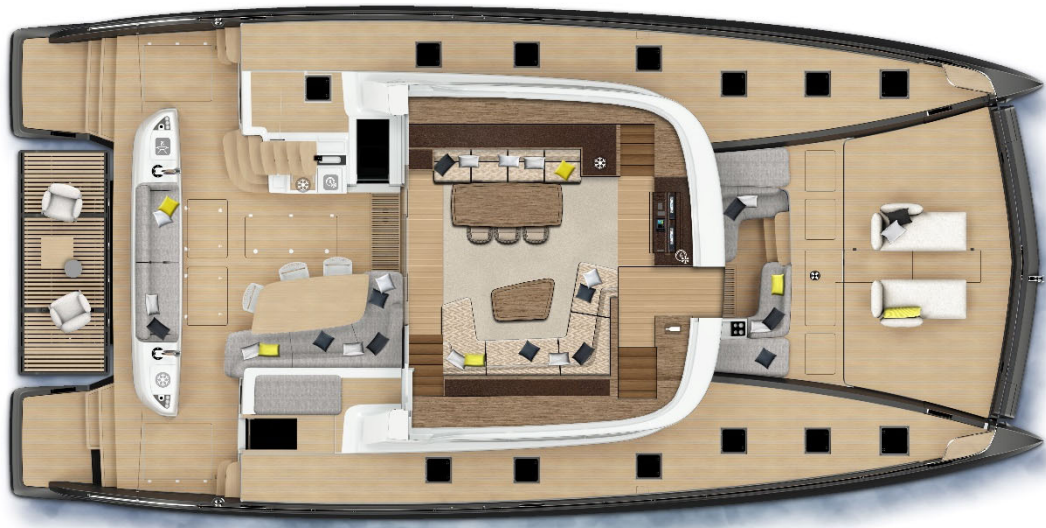
- Floors: Alpi Kord Wengue
- Countertops: Corian® - Graylite

Bathrooms and WC:

- Furniture and bulkheads: Alpi light oak (Brushed/hollow pores finish)
- Recesses: Alpi smoked oak (Brushed/hollow pores finish)
- Floors: Alpi Kord Wengue and Corian® - Clam Shell
- Bathroom countertops: Corian® - Clam Shell

### 13.3. UPHOLSTERY, BLINDS AND MATTRESSES:

- Interior upholstery: Smart Shark
- Mattresses made of high resistance foam (density 35kg/m<sup>3</sup> - 2.2 PCF)
- Blackout roller blinds in cabins
- Removable blackout curtains for aft companionways (galley and owner's cabin)
- Roller blinds in salon
- Blackouts and flyscreens for deck hatches

**13.4. a. Lateral galley: salon**

- Access from the aft cockpit through a wide glazed sliding door (open dimensions 2.3 x 2.1 m/7'7" x 6'11")
- Access to the forward cockpit by a (PMMA) glazed door
- 360° PMMA glazing around the coachroof
- 2 aft PMMA glazing

**PORT:**

- Straight sofa with 1 storage locker beneath the seat
- 1 dining table (1.5 x 0.9 m/4'11" x 3')
- 1 storage unit forward (option: refrigerator)
- 1 storage unit aft
- 3 leather chairs

**STARBOARD**

- U-shaped sofa with 1 storage locker beneath the seat
- 1 wood coffee table (1.22 x 0.77 m/4' x 30")

**STARBOARD FORWARD AREA**

- Furniture unit with plexiglass storage for glasses and bottles

- Furniture unit with shelf and 1 door (option: wine cellar)

#### **CHART TABLE**

- Chart table equipped with optional electronics
- Dedicated chart table leather chair
- Storage in the chart table unit
- Option: ice-maker



**13.4. b. Lateral galley: 4-cabin owner's version****PORT HULL****Galley:**

- Direct access from the aft cockpit
- Manually-operated companionway closure with electric lock
- 2 x T44 opening deck hatches
- 1 PMMA fixed hull window with integrated opening T3 hatch, 1 aft window with integrated opening T3 hatch
  
- Outboard side:
  - Corian® countertop with double stainless-steel sink and hot/cold mixer faucet
  - 1 Low-level unit, 1 door, with shelves (option: dishwasher)
  - 1 Under-sink unit with 2 drawers
  - 1 Sliding trash [70L/18 Us gal] receptacle with 2 containers
  - 1 Low-level unit with 1 drawer for cutlery storage and sliding bottle storage
  - 4-burner induction hob 230V [MIELE] and pan clamps
  - 1 Electric oven [MIELE]. Storage drawer beneath oven
  - 1 Extractor hood [ELECTROLUX]
  - 5 High-level units with horizontal doors

- Combined refrigerator/freezer with integrated [SAMSUNG - 407L/210L (14.4/7.4 cu ft)]
  
- Aft bulkhead:
  - 1 Low-level unit with 2 shelves
  
- Inboard side:
  - 1 Low-level unit with 4 drawers for crockery storage
  - 1 Low-level unit with 2 shelves (option: washer/dryer)
  - 1 High-level unit with 2 drawers, 2 horizontal doors and 2 vertical doors (option: microwave and coffee machine)
  - Dining area with:
    - Dining table with stainless-steel leg
    - 2 Bench seats facing each other with drawer beneath forward seat
    - 2 High-level storage units with horizontal doors
    - Under-floor storage at table
    - Options : underfloor refrigerator and/or freezer

**Central cabin:**

- 1 Double bed (2.05 x 1.60 m/6'9" x 5'3") with side access
- 2 Bedside tables, with, on each side:
  - Coin tray and glass holder
  - Horizontal door with sockets
- 1 Hanging locker
- 2 Storage drawers beneath the bed and 2 storage cupboards with door
- Outboard side:
  - Low-level unit with doors and shelves (option: TV)
- 1 Opening deck hatch, T44
- 1 Fixed hull window (PMMA) with 1 integrated opening hatch, T3
- Access door direct to bathroom

**Central bathroom:**

- Corian® vanity top with integrated washbasin
- Hot and cold mixer faucet
- High-level storage with 1 mirrored door and recesses
- Low-level unit 1 door
- Integral shower with Corian® floor
- Shower head + bracket + rail
- 1 Opening deck hatch, T44
- Electric fresh-water WC [TECMA]

**Forward cabin:**

- 1 Double bed (2.05 x 1.60 m/6'9" x 5'3") with side access
- 2 Bedside tables, with, on each side:
  - Coin tray and glass holder
  - Horizontal door with sockets
- 2 Storage drawers beneath the bed
- Outboard side:
  - High-level hanging locker
  - Low-level unit with doors and shelves (option: TV)
- 1 Opening deck hatch, T44
- 1 Fixed hull window (PMMA) with 1 integrated opening hatch, T3
- Access door direct to bathroom

**Forward bathroom:**

- Corian® vanity top with integrated washbasin
- High-level storage with 1 mirrored door and recesses
- Low-level storage, 2 doors
- 2-door storage unit above WC
- Separate shower with Corian® floor
- Shower head + bracket + rail
- 1 Opening deck hatch, T44
- Separate electric fresh-water WC [TECMA]

## STARBOARD HULL

### Aft cabin (owner's):

- 1 Double bed (2.00 x 1.70 m/6'7" x 5'7") with side access
- 2 Storage drawers beneath the bed and storage cupboards with door
- 2 Bedside tables, with, on each side:
  - Coin tray and glass holder
  - Horizontal door with sockets
- 1 Desk with :
  - Bookshelf above, 1 door in leather and 1 single-door unit
  - Dedicated leather chair
- Outboard side:
  - 1 low-level unit with 4 doors and shelves (option: TV)
  - 1 bench seat
  - 1 full-height bookcase above the bench seat
- Inboard side:
  - 2 high-level hanging lockers with sliding doors
  - 2 low-level units each with 1 drawer and 2 doors
- 2 Opening deck hatches, T44
- 1 Fixed hull window (PMMA) with 1 integrated opening hatch, T3
- Direct access from salon or cockpit with manually-operated companionway closure with electric lock

### Aft bathroom (owner's):

- 1 Fixed hull window (PMMA), aft
- Corian® vanity top with integrated washbasin
- Hot/cold mixer faucet
- High-level unit with 2 sliding mirrored doors and shelves
- Low-level storage with 2 drawers
- Separate shower with Corian® floor
- Shower head in ceiling + shower head on bracket
- Separate WC with door:
  - 1 Low-level unit with horizontal doors

- 1 Wall mirror
- Electric fresh water WC [TECMA]
- 1 Fixed hull window (PMMA) with 1 integrated opening hatch, T3

**Forward cabin:**

- 1 Double bed (2.05 x 1.60 m/6'9" x 5'3") with side access
- 2 bedside tables, with, on each side:
  - Coin tray and glass holder
- Horizontal door with sockets
- 2 Storage drawers beneath the bed
- Outboard side:
  - Low-level unit with doors and shelves (option: TV)
- 2 Opening deck hatches, T44
- 1 Fixed hull window (PMMA) with 1 integrated opening hatch, T3
- Large high-level hanging locker with 1 drawer below and 2-door low-level unit
- 1 Wall mirror on aft bulkhead
- Sliding access door direct to bathroom

**Forward bathroom:**

- Corian® vanity top with integrated washbasin
- Hot/cold mixer faucet
- High-level unit with 1 mirrored door and recesses
- Low-level 2-door unit
- High-level unit, 2 doors on the inboard side
- Separate shower with Corian® floor
- 1 Opening deck hatch, T44
- Separate electric fresh-water WC [TECMA]

### 13.4. c. Lateral galley: 5-cabin version



#### PORT HULL

##### Galley:

- Direct access from the aft cockpit
- Manually-operated companionway closure with electric lock
- 2 x T44 opening deck hatches
- 1 PMMA fixed hull window with integrated opening T3 hatch, 1 aft window with integrated opening T3 hatch
  
- Outboard side:
  - Corian® countertop with double stainless-steel sink and hot/cold mixer faucet
  - 1 Low-level unit, 1 door, with shelves (option: dishwasher)
  - 1 Under-sink unit with 2 drawers
  - 1 Sliding trash [70L/18 Us gal] receptacle with 2 containers
  - 1 Low-level unit with 1 drawer for cutlery storage and sliding bottle storage
  - 4-burner induction hob 230V [MIELE] and pan clamps
  - 1 Electric oven [MIELE]. Storage drawer beneath oven
  - 1 Extractor hood [ELECTROLUX]
  - 5 High-level units with horizontal doors

- Combined refrigerator/freezer with integrated [SAMSUNG - 407L/210L (14.4/7.4 cu ft)]
  
- Aft bulkhead:
  - 1 Low-level unit with 2 shelves
  
- Inboard side:
  - 1 Low-level unit with 4 drawers for crockery storage
  - 1 Low-level unit with 2 shelves (option: washer/dryer)
  - 1 High-level unit with 2 drawers, 2 horizontal doors and 2 vertical doors (option: microwave and coffee machine)
  - Dining area with:
    - Dining table with stainless-steel leg
    - 2 Bench seats facing each other with drawer beneath one seat
    - 2 High-level storage units with horizontal doors
    - Under-floor storage at table
    - Options: underfloor refrigerator et/or freezer

**Central cabin:**

- 1 Double bed (2.05 x 1.60 m/6'9" x 5'3") with side access
- 2 Bedside tables, with, on each side:
  - Coin tray and glass holder
  - Horizontal door with sockets
- 1 Hanging locker
- 2 Storage drawers beneath the bed and 2 storage cupboards with door
- Outboard side:
  - Low-level unit with doors and shelves (option: TV)
- 1 Opening deck hatch, T44
- 1 Fixed hull window (PMMA) with 1 integrated opening hatch, T3
- Access door direct to bathroom

**Central bathroom:**

- Corian® vanity top with integrated washbasin
- Hot and cold mixer faucet
- High-level storage with 1 mirrored door and recesses
- Low-level unit 1 door
- Integral shower with Corian® floor
- Shower head + bracket + rail
- 1 Opening deck hatch, T44
- Electric fresh-water WC [TECMA]

**Forward cabin:**

- 1 Double bed (2.05 x 1.60 m/6'9" x 5'3") with side access
- 2 Bedside tables, with, on each side:
  - Coin tray and glass holder
  - Horizontal door with sockets
- 2 Storage drawers beneath the bed
- Outboard side:
  - High-level hanging locker
  - Low-level unit with doors and shelves (option: TV)
- 1 Opening deck hatch, T44
- 1 Fixed hull window (PMMA) with 1 integrated opening hatch, T3
- Access door direct to bathroom

**Forward bathroom:**

- Corian® vanity top with integrated washbasin
- High-level storage with 1 mirrored door and recesses
- Low-level storage, 2 doors
- 2-door storage unit above WC
- Separate shower with Corian® floor
- Shower head + bracket + rail
- 1 Opening deck hatch, T44
- Separate electric fresh-water WC [TECMA]



## STARBOARD HULL

### Aft cabin:

- 1 Fixed hull window (PMMA) with 1 integrated opening hatch, T3
- 2 Single beds (2.05 x 0.85 m/6'9" x 2'9") transformable into double (2.05 x 1.76 m/6'9" x 5'9")
- 1 Shared bedside table (\*) with, on each side :
  - Coin tray and glass holder
  - Drawer
- 2 Storage drawers beneath the inboard side bed, with side access
- 4 Storage drawers beneath the outboard side bed, with side access

Hanging locker on inboard side (option tv) with:

- 1 drawer and two doors below
- 2 doors above with hanging locker on one side and shelves on the other
- 3 Small storage compartments to outboard side
- 1 Small storage compartment to inboard side
- 1 Wall mirror on the forward bulkhead
- Access door direct to bathroom

(\*) accessible from outboard side in double bed version

### Aft bathroom:

- Corian® vanity top with integrated washbasin
- Hot and cold mixer faucet
- High-level storage with 1 mirrored door and recesses
- Low-level unit 1 door
- Integral shower with Corian® floor
- Shower head + bracket + rail
- 1 Opening deck hatch, T44
- Electric fresh-water WC [TECMA]

### Central cabin:

- 1 Double bed (2.05 x 1.60 m/6'9" x 5'3") with side access
- 2 Bedside tables, with, on each side:

- Coin tray and glass holder
- Horizontal door with sockets
- 1 Hanging locker
- 2 Storage drawers beneath the bed and 2 storage cupboards with door
- Outboard side:
  - Low-level unit with doors and shelves (option: TV)
- 1 Opening deck hatch, T44
- 1 Fixed hull window (PMMA) with 1 integrated opening hatch, T3
- Access door direct to bathroom

**Central bathroom:**

- Corian® vanity top with integrated washbasin
- Hot and cold mixer faucet
- High-level storage with 1 mirrored door and recesses
- Low-level unit 1 door
- Integral shower with Corian® floor
- Shower head + bracket + rail
- 1 Opening deck hatch, T44
- Electric fresh-water WC [TECMA]

**Forward cabin:**

- 1 Double bed (2.05 x 1.60 m/6'9" x 5'3") with side access
- 2 Bedside tables, with, on each side:
  - Coin tray and glass holder
  - Horizontal door with sockets
- 2 Storage drawers beneath the bed
- Outboard side:
  - High-level hanging locker
  - Low-level unit with doors and shelves (option: TV)
- 1 Opening deck hatch, T44
- 1 Fixed hull window (PMMA) with 1 integrated opening hatch, T3
- 1 Wall mirror on aft bulkhead

- Access door direct to bathroom

**Forward bathroom:**

- Corian® vanity top with integrated washbasin
- High-level storage with 1 mirrored door and recesses
- Low-level storage, 2 doors
- 2-door storage unit above WC
- Separate shower with Corian® floor
- Shower head + bracket + rail
- 1 Opening deck hatch, T44
- Separate electric fresh-water WC [TECMA]

### 13.5. a. **Panoramic galley: salon**



- Direct access from the aft cockpit through a wide glazed sliding door (open dimensions 2.3 x 2.1 m/7'7" x 6'11")
- Access to the forward cockpit by a (PMMA) glazed door
- 360° PMMA glazing around the coachroof
- 2 aft PMMA glazing

#### TO PORT

- Galley (outboard side):
  - Corian® countertop with double stainless-steel sink and hot/cold mixer faucet
  - 4-burner induction hob 230V [ELICA] with pan-clamps and integrated extractor hood [ELECTROLUX]
  - 1 Low-level unit with 2 drawers, 2 doors and 2 horizontal doors (option: dishwasher)
  - 1 Sliding trash [70L/18 Us gal] receptacle with 2 containers
  - High level sliding storage with 1 shelf (option: microwave)
  - Combined refrigerator/freezer (WHIRLPOOL- Volume 299L/101L – 10.6/3.6 cu ft)
- Central island:
  - 1 Low-level unit with 5 drawers and 1 door (option: washing machine)

- 1 Integrated electric oven [MIELE]
- Bar-type sliding high-level unit with access to storage tray

#### **TO STARBOARD**

- L-shaped sofa with 1 storage locker beneath the seat base
- 3 leather chairs
- 1 wood table (2,00 x 1,02 m/6'7" x 3'4")

#### **FORWARD AREA TO STARBOARD**

- Furniture unit with plexiglass storage for glasses and bottles
- Furniture unit with shelf and 1 door (option: wine cellar)

#### **CHART TABLE**

- Chart table equipped with optional electronics
- Dedicated chart table leather chair
- Storage in the chart table unit
- Option: ice-maker

**13.5. b. Panoramic galley: 5-cabin owner's version****PORT HULL****Aft cabin:**

- 1 Double bed (2.05 x 1.60 m/6'9" x 5'3")
- 1 Storage drawer beneath the bed
- 2 Bedside tables with:
  - 1 drawer
  - Horizontal door with sockets
- Outboard side:
  - 1 hanging locker
- 1 Opening deck hatch, T44
- 1 Fixed hull window (PMMA) with 1 integrated opening hatch,
- 1 Fixed window (PMMA), aft with 1 integrated opening hatch, T3
- Optional TV on forward bulkhead

**Aft bathroom:**

- Corian® vanity top with integrated washbasin
- Hot and cold mixer faucet
- High-level storage with 1 mirrored door and 3 shelves

- Low-level unit 1 door
- Integral shower with Corian® floor
- Shower head + bracket + rail
- 1 Opening deck hatch, T44
- Electric fresh-water WC [TECMA]

**Central cabin:**

- 1 Double bed (2.05 x 1.60 m/6'9" x 5'3") with side access
- 2 Bedside tables, with, on each side:
  - Coin tray and glass holder
  - 2 storage sections with doors
- 1 Hanging locker
- 2 Storage drawers beneath the bed
- Outboard side:
  - Low-level unit with doors and shelves (option: TV)
- 1 Opening deck hatch, T44
- 1 Fixed hull window with integrated opening hatch
- Access door direct to bathroom

**Central bathroom:**

- Corian® vanity top with integrated washbasin
- Hot and cold mixer faucet
- High-level storage with 1 mirrored door and recesses
- Low-level unit 1 door
- Integral shower with Corian® floor
- Shower head + bracket + rail
- 1 Opening deck hatch, T44
- Electric fresh-water WC [TECMA]

**Forward cabin:**

- 1 Double bed (2.05 x 1.60 m)
- 2 Bedside tables, with, on each side:
  - Coin tray and glass holder
  - Horizontal door with sockets
- 2 Storage drawers beneath the bed
- Outboard side:
  - High-level hanging locker
  - Low-level, 3-door unit with shelves (option: TV)
- 1 Opening deck hatch, T44
- 1 Fixed hull window with integrated opening hatch
- Access door direct to bathroom

**Forward bathroom:**

- Corian® vanity top with integrated washbasin
- High-level storage with 1 mirrored door and recesses
- Low-level storage, 2 doors
- 2-door storage unit above the WC
- Separate shower with Corian® floor
- Shower head + bracket + rail
- 1 Opening deck hatch, T44
- Separate electric fresh-water WC [TECMA]

**STARBOARD HULL****Aft cabin (owner's):**

- 1 Double bed (2 x 1.70 m / 6'7" x 5'7") with side access
- 2 Storage drawers beneath the bed and storage cupboards with drawers
- 2 Bedside tables, with, on each side:
  - Coin tray and glass holder
  - Horizontal door with sockets
- 1 Desk with bookshelf above, 1 door in leather and 1 single-door unit
- Outboard side:



- Low-level unit with doors and shelves (option: TV)
- 1 bench seat
- 1 full-height bookcase above the bench seat
- Inboard side:
  - 2 high-level hanging lockers with sliding doors
  - 2 low-level units each with 1 drawer and 2 doors
- 2 Opening deck hatches, T44
- 1 Fixed hull window (PMMA) with 1 integrated opening hatch, T3
- Direct access from salon or cockpit with manually-operated companionway closure with electric lock

**Aft bathroom (owner's):**

- 1 Fixed hull window (PMMA)
- Corian® vanity top with integrated washbasin
- Hot/cold mixer faucet
- High-level unit with 2 sliding mirrored doors and recesses
- Low-level storage with 2 drawers
- Separate shower with Corian® floor
- Shower head in ceiling + shower head on bracket
- Separate WC with door:
  - 1 low-level unit with horizontal doors
  - 1 wall mirror
  - Electric fresh water WC [TECMA]
  - 1 Fixed hull window (PMMA) with 1 integrated opening hatch, T3

**Forward cabin:**

- 1 Double bed (2.05 x 1.60 m/6'9" x 5'3")
- 2 Bedside tables, with, on each side:
  - Coin tray and glass holder
  - Horizontal door with sockets
- 2 storage drawers beneath the bed
- Outboard side:

- High-level hanging locker
- Low-level unit with doors and shelves (option: TV)
- 2 Opening deck hatches, T44
- 1 Fixed hull window with integrated opening hatch, T3
- Large high-level hanging locker with 1 drawer below and low-level, 2 door unit
- 1 Wall mirror
- Access door direct to bathroom

**Forward bathroom:**

- Corian® vanity top with integrated washbasin
- Hot and cold mixer faucet
- High-level storage with 1 mirrored door and recesses
- Low-level unit, 2 doors
- High-level, 2 door storage, inboard side
- Separate shower with Corian® floor
- 1 Opening deck hatch, T44
- Separate electric fresh-water WC [TECMA]

**13.5. c. Panoramic galley: 6-cabin version****PORT HULL****Aft cabin:**

- 1 Double bed (2.05 x 1.60 m/6'9" x 5'3")
- 1 Storage drawer beneath the bed
- 2 Bedside tables with:
  - 1 drawer
  - Horizontal door with sockets
- Outboard side:
  - 1 hanging locker
- 1 Opening deck hatch, T44
- 1 Fixed hull window (PMMA) with 1 integrated opening hatch, T3
- 1 Fixed window (PMMA), aft with 1 integrated opening hatch, T3
- Optional TV on forward bulkhead

**Aft bathroom:**

- Corian® vanity top with integrated washbasin
- Hot and cold mixer faucet
- High-level storage with 1 mirrored door and recesses
- Low-level unit, 1 door

- Integral shower with Corian® floor
- Shower head + bracket + rail
- 1 Opening deck hatch, T44
- Electric fresh-water WC [TECMA]

**Central cabin:**

- 1 Double bed (2.05 x 1.60 m/6'9" x 5'3") with side access
- 2 Bedside tables, with, on each side:
  - Coin tray and glass holder
  - 2 storage sections with doors
- 1 Hanging locker
- 2 Storage drawers beneath the bed
- Outboard side:
  - Low-level unit with doors and shelves (option: TV)
- 1 Opening deck hatch, T44
- 1 Fixed hull window with integrated opening hatch
- Access door direct to bathroom

**Central bathroom:**

- Corian® vanity top with integrated washbasin
- Hot and cold mixer faucet
- High-level storage with 1 mirrored door and recesses
- Low-level unit, 1 door
- Integral shower with Corian® floor
- Shower head + bracket + rail
- 1 Opening deck hatch, T44
- Electric fresh-water WC [TECMA]

**Forward cabin:**

- 1 Double bed (2.05 x 1.60 m/6'9" x 5'3")
- 2 Bedside tables, with, on each side:
  - Coin tray and glass holder
  - Horizontal door with sockets

- 2 Storage drawers beneath the bed
- Outboard side:
  - High-level hanging locker
  - Low-level unit with doors and shelves (option: TV)
- 1 Opening deck hatch, T44
- 1 Fixed hull window with integrated opening hatch
- Access door direct to bathroom

#### Forward bathroom:

- Corian® vanity top with integrated washbasin
- High-level storage with 1 mirrored door and recesses
- Low-level storage, 2 doors
- 2-door storage unit above the WC
- Separate shower with Corian® floor
- Shower head + bracket + rail
- 1 Opening deck hatch, T44
- Separate electric fresh-water WC [TECMA]

#### STARBOARD HULL

##### Aft cabin:

- 1 Fixed hull window (PMMA) with 1 integrated opening hatch, T3
  - 2 Single beds (2.05 x 0.85 m/6'9" x 2'9") transformable into double (2.05 x 1.76 m/6'9" x 5'9")
  - 1 Shared bedside table (\*) with, on each side :
    - Coin tray and glass holder
    - Drawer
  - 2 Storage drawers beneath the inboard side bed, with side access
  - 4 Storage drawers beneath the outboard side bed, with side access
- Hanging locker on inboard side (option tv) with:
- 1 drawer and two doors below
  - 2 doors above with hanging locker on one side and shelves on the other
- 3 Small storage compartments to outboard side

- 1 Small storage compartment to inboard side
- 1 Wall mirror on the forward bulkhead
- Access door direct to bathroom

(\* accessible from outboard side in double bed version)

#### **Aft bathroom:**

- Corian® vanity top with integrated washbasin
- Hot and cold mixer faucet
- High-level storage with 1 mirrored door and shelves
- Low-level unit 1 door
- Integral shower with Corian® floor
- Shower head + bracket + rail
- 1 Opening deck hatch, T44
- Electric fresh-water WC [TECMA]

#### **Central cabin:**

- 1 Double bed (2.05 x 1.60 m/6'9" x 5'3") with side access
- 2 Bedside tables, with, on each side:
  - Coin tray and glass holder
  - 2 storage sections with doors
- 1 Hanging locker
- 2 Storage drawers beneath the bed
- Outboard side:
  - Low-level unit with doors and shelves (option: TV)
- 1 Opening deck hatch, T44
- 1 Fixed hull window with integrated opening hatch
- Access door direct to bathroom

#### **Central bathroom:**

- Corian® vanity top with integrated washbasin
- Hot and cold mixer faucet
- High-level storage with 1 mirrored door and recesses

- Low-level unit, 1 door
- Integral shower with Corian® floor
- Shower head + bracket + rail
- 1 Opening deck hatch, T44
- Electric fresh-water WC [TECMA]

**Forward cabin:**

- 1 Double bed (2.05 x 1.60 m/6'9" x 5'3")
- 2 Bedside tables, with, on each side:
  - Coin tray and glass holder
  - Horizontal door with sockets
- 2 Storage drawers beneath the bed
- Outboard side:
  - Low-level unit with doors and shelves (option: TV)
- 2 Opening deck hatches, T44
- 1 Fixed hull window with 1 integrated opening hatch, T3
- Large high-level hanging locker with 1 drawer below and low-level unit with 2 doors
- 1 Wall mirror
- Access door direct to bathroom

**Forward bathroom:**

- Corian® vanity top with integrated washbasin
- Hot and cold mixer faucet
- High-level storage with 1 mirrored door and recesses
- Low-level unit, 2 doors
- High-level unit, 2 doors, on inboard side
- Separate shower with Corian® floor
- 1 Opening deck hatch, T44
- Electric fresh-water WC [TECMA]



162, quai de Brazza  
CS 81217  
33072 Bordeaux Cedex - France  
Tel. 33 + (0) 557 80 92 80  
E-mail: [info@cata-lagoon.com](mailto:info@cata-lagoon.com)  
[www.cata-lagoon.com](http://www.cata-lagoon.com)